

## WEATHER

Wednesday: Partly cloudy & warm with 20% chance of showers. High in upper 70s.

Thursday through Saturday: Partly cloudy & warm with scattered showers. High near 80 to lower 90s. Low upper 50s to upper 60s.

# Stone County LEADER

September 14, 1988

Public

Volume 37 No. 24

"Serving The Folk Music Capital Of The World"

25¢ PER COPY



Happy smiles went 'round and 'round as youngsters rode up and down on the backs of carousel ponies during the Stone County

Fair. It was one of many activities and exhibits offered during the four-day event. See more photos on pages 4 and 10.

Leader/Schub

## Quorum court approves police contract proposal

By Lori Freeze

The Stone County Quorum Court last Thursday night approved a budget committee recommendation that the City of Mountain View be asked to pay \$63,077 for a police contract.

The city council has expressed an interest in dissolving its two-man police force and returning to an agreement with the county for police protection.

The amount proposed by the committee includes the cost of two deputies' salaries, one dispatcher's salary, two new cars every four years and half of the prosecuting attorney's salary. The deputies and dispatcher would be in addition to the personnel already employed by the sheriff's department.

Sheriff Dave Barnum said he would like to have all law enforcement in the county conducted from his office and the additional deputies and dispatcher would be necessary to run the department efficiently. "I think it would work better all together," he said.

He said the proposal was a "bottom dollar" figure. Barnum said the amount does not include cost of jailing city prisoners, which is covered by a \$5 court cost charge, uniforms for officers or other miscellaneous expenses.

Justice of the Peace Scott Branscum said the amount may seem high but not when the county's law enforcement budget is compared with it. If the proposal is approved, the county's law enforcement budget would rise to more than \$264,000 with the county funding all but the amount of the city agreement.

JP James Henderson asked why the agreement could not be set up on a percentage basis to take care of cost increases. Bar-

num said he would recommend the \$63,077 initially but after the first year a percentage would probably need to be agreed upon.

The budget committee recommended that the percentage be based on population as in the sales tax division. With a \$264,000 budget, the city's share would amount to about \$71,000.

Attorney Whit Fowlkes, the county's legal adviser, told the court that increased costs will be seen because more work is developing in law enforcement as the county grows. "You're not going to get where you need any less law enforcement," he said.

Continued on Page 3

## Manslaughter charges are filed

Manslaughter charges have been filed against Michael Johnny Davidson, 34, of Mountain View, Guion Route for a 7:30 p.m. shooting last Tuesday which resulted in the death of Ronnie Brightwell, 37, of Mountain View.

The two men were involved in a dispute at a house owned by Brightwell's mother. Brightwell was shot in the abdomen at close range with a 12 gauge shotgun according to Stone County Sheriff Dave Barnum.

Brightwell was taken to the Stone County Medical Center, then transferred to White River Medical Center in Batesville. He died around 8 p.m. Tuesday.

Davidson was arrested by the Stone County Sheriff's Department Tuesday. He is being held in the Stone County jail on \$10,000 bond.

## Aldermen in Mountain View, Fifty Six draw opposition

Three alderman in the City of Mountain View and three in the City of Fifty Six have drawn opposition for the municipal election set for November 8.

In Mountain View, Bill Lancaster and H.D. Taylor will compete for the Ward 2, Position 1 seat and Bill Morrison and Edward Harris will compete for the Ward 2, Position 2 seat.

In Ward 3, Position 2, Coy Cowell and Virgie E. Mitchell are competing. Current council members Mildred Bennett, Crawford A. (Joe) Wyatt and Douglas Storey will run unopposed.

Mountain View City Recorder-Treasurer Brenda Burroughs has drawn opposition from Barbara Jean Harris for that position.

In Fifty Six, Harold G. Mitchell and Charles Jason have filed for the Position 5 seat; Thomas J. Wallace and J.E. Jason have filed for the Position 4 seat and Hubert Hampton and Hugh Ramsey will face off for the Position 1 seat.

John J. Mitchell and Oma Jean Balentine will run opposed. Juanita Kendrick will run opposed for Fifty Six City Clerk/Recorder.

The deadline for filing was Friday.

Two write-in candidates filed for Stone County Constable Positions: Charles H. Treece in Flag Township and Darrell Jones in Wilson Township.

## Winners of 1988 fair events listed

Carla Gjestvang, the daughter of David Gjestvang and Etta Sutton, was the big winner in the 1988 Stone County Fair Queen Pageant held Saturday night. Lorie Trammell, the daughter of Clinton and Sharon Trammell was first runner-up and April Thatcher, the daughter of Joe and Jeannie Thatcher, was second runner-up.

In the Junior Miss pageant, April Jessen, the daughter of Keith and Sonja Jessen, was crowned the winner with Marietta McClung, the daughter of Garry and Jeannie McClung, as first runner-up and Natalie Altman, the daughter of J.T. and Bernice Altman, as second runner-up.

Young Miss Stone County Fair Queen for 1988 is Kimberly Wilson, the daughter of Jerry and Pam Wilson. Jennifer Green, the daughter of Bill and Nadine Green was first runner-up and

Bobbie Lea Fletcher, the daughter of Donnie and Linda Fletcher, was second runner-up.

Winner of the Little Miss Petite division was Chasity Nicole Vallery, the daughter of Eddie and Mary Ann Vallery. Elisha Cartwright, the daughter of Dennis and Rita Cartwright was first runner-up and Mandy McClung, the daughter of Garry and Jeannie McClung, was second runner-up.

Sarah Elizabeth Stevens, the daughter of Bruce and Vikki Stevens, was named Little Miss Stone County Fair Queen. Tamara Brooke Hipp, the daughter of Roger and Debbie Hipp, was first runner-up and Katie Ferren, the daughter of Danny and Tammy Ferren, was second runner-up. The Little Mr. Stone County Fair pageant was won by Justin Sutton, the son of Larry and Pam Sutton. First runner-up was Deric Sutton, the son of Eddie and

Holly Sutton, and second runner-up was Trent Martin, the son of Mark and Pam Martin.

The Prize Baby Girl winner was Tollie Kay Lancaster, the daughter of Todd and Teresa Lancaster. First runner-up was Abby Michelle Hipp, the daughter of Roger and Debbie Hipp, and second runner-up was Cassie Jo Vannatter, the daughter of Tommy and Nancy Vannatter.

The Prize Baby Boy winner was Jonathan Aaron Keith Masters, the son of Ronda and Jimmy Masters. Kaji Ross Nishluuchi was first runner-up and Zane Johnson, the son of Earlene Johnson, was second runner-up.

A Forestry Contest was held during the fair for the first time this year. Several men and women entered the four events offered.

Floyd Wallis and Eddie Vallery were the winning pair in the two-man cross cut saw competition. J.C. Bonds and Bob Atchison

placed second, followed by Paul Brock and Margaret Love.

Howard Cavender won the bow saw competition, followed by Todd Avey and Bob Atchison.

The team of Bonds and Atchison won the log rolling competition, followed by Wallis and Cavender then Anthony Avey and Todd Avey.

Christy Bronthaver won the bait casting competition in the age 6-12 division, followed by Eric Mitchell and Robert Smith. Todd Avey won the 12-18 division, followed by Vance Keaton and Donald Mallet. Wallis won the adult division, followed by Cavender and Bonds.

Another new event for this year's fair was the Youth Pet Show. The Best of Show recipient was a 5-year-old Sheltie Collie shown by Donna Morrison, the daughter of Steve and Pam Morrison of Fox.

Continued on Page 10

## Only one position contested in school board elections

By Fran Fulton

This is the second of a two-part feature on the upcoming school elections. It may be because of the relative calm that prevails on the local education scene, or because of an unfamiliar election schedule, but, for whatever reason, only one school board position will be up for grabs in next Tuesday's voting.

This is at Rural Special, where Bob Lay made good on his pledge at a voter rally late last winter to run for the board. His opponent: the veteran incumbent, Harry Sebert.

At Mountain View, attorney Whit Fowlkes will step into the position vacated by the departure of the group's longtime chairman, Bob Turner. Another newcomer to board service, Shane McElroy, is likewise unopposed for the seat at Timbo formerly held by Floyd George.

Two incumbents will automatically be re-elected to their posts. They are Mike Balentine, who represents Fifty Six on the Tri-County Board and Paul Miller of Fox, who holds the Zone Three slot on the Stone County Board of Education.

James Robert (Bob) Lay is a 1957 graduate of Rural Special. He and his wife, Sharon, have two children currently enrolled, Anthony and Tim. A self-employed businessman for the past 25 years, he currently owns Fox Garage. He is also vice president of the Fox Fire Department.

He termed Rural Special School as "the backbone of the community," noting that, "if the school was to leave, it would be a hardship on our community. A lot of people would leave."

If elected, he pledged "to work to see that all the state standards

Continued on Page 11

## Magazine features area

Mountain View and area attractions have been the subject of several state and national publications and broadcasts during the past several months. Next month, the area will receive some of its most massive coverage when it is featured in a three page article in *Southern Living* magazine.

The article is accompanied by color photographs of local people with crafts or musical instruments and is entitled "The Ozarks' Fall Harvest Tradition." It includes information about the Ozark Folk Center and craftsmen working there.

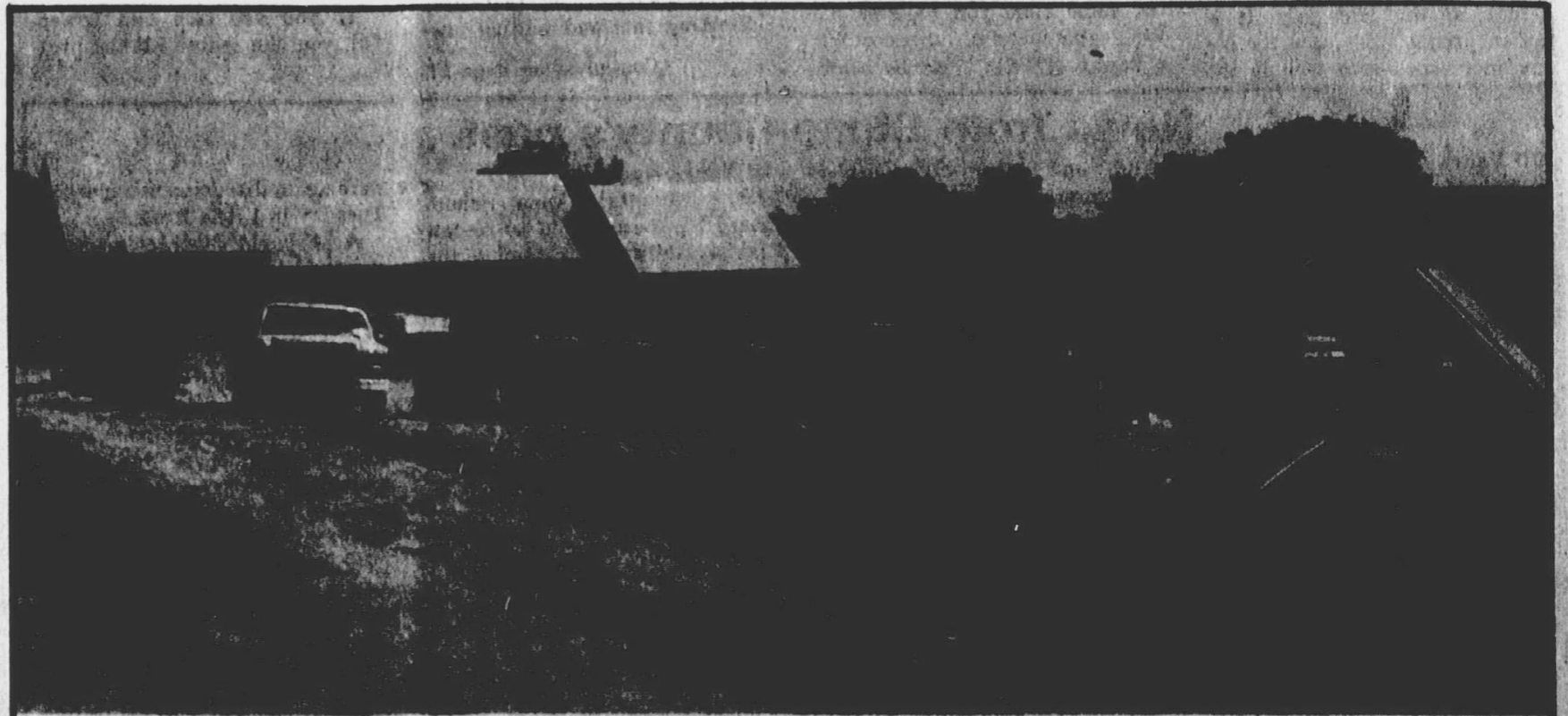
The magazine has a circulation of more than 2 million copies. Advertising space equal to that

allotted for the article would amount to \$150,000.

Among those named or pictured in the magazine are Jimmy Ford, Julia Mae Case, Comer Mullins, Mary Gillihan, Ray Ramsey, Georgia and Sheryl Irvine, Kermit Taylor and the late Clarice Chitwood.

The October issue of the magazine is expected to appear in local stores late this month.

Mountain View and the Ozark Folk Center have been featured most recently on the CBS Evening News and in *The Midwest Motorist* magazine, among others. The new USA Today television program is expected to feature the area soon.

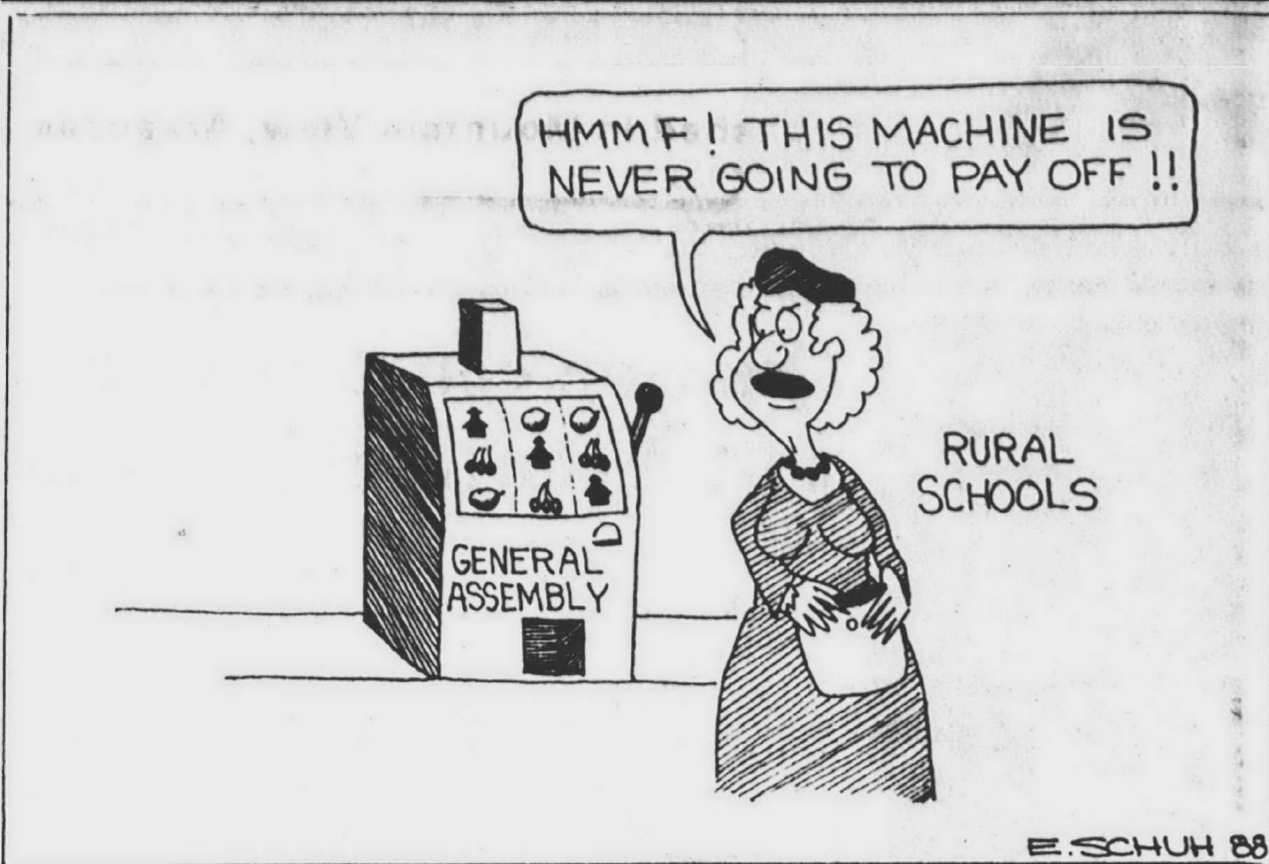


## Apartments progress

Construction on Mountain View Villas on Clarence Street is progressing ahead of schedule. Work on the 27-unit apartment complex began in August. Bert Crow, of El Dorado, construction

superintendent, said the units should be ready for occupancy in December.

# Editorials and Opinions ...



## Voters to decide Timbo's fate

No less than the future of the Timbo schools will be at stake when voters go to the polls next Tuesday.

The district has been losing ground steadily as far as enrollment goes, which, in turn, has triggered repeated cutbacks in state revenue. This year's reduction amounted to a staggering \$35,696.

School officials have had no choice but to turn to property owners to make up the shortfall.

The nine mills that will be on the ballot, if approved, won't exactly put Timbo on easy street. As is the case in most rural schools across Arkansas, there just isn't much in the way of taxable wealth within the district's boundaries. The extra millage will generate \$32,800 per year, not even enough to make up for this year's cutback.

If there are any naysayers out here, they probably fall in one of two camps.

One, the optimists who think the General Assembly will come to Timbo's rescue this winter. This, it seems, is a mighty chancy gamble. While just about everyone agrees that teacher pay raises are long overdue, there is much less support for money to pay the administrative expenses of the state's financially-troubled small schools.

To make matters worse, the lawmakers will be handed an enormous wish list of state funding needs, many left over from the lean financial year of 1987. Timbo's survival will pale in importance as the General Assembly considers stepped-up revenue for higher education, the

prisons, social services (including nursing home reforms), tourism promotion and an ambitious highway improvement program.

Timbo's current millage is 19, which is more than six mills below the state average. Its people must be willing to shoulder an increased tax load themselves before asking for the legislature to come to their relief.

On the other side of the spectrum are the doom and gloom pessimists who think the days of small schools everywhere are numbered.

Rural districts were expected to close in droves because they couldn't measure up to the exacting new standards. This hasn't been the case, and there has been a growing acceptance of the fact that small schools will continue to be a part of the state's educational landscape.

(Even Scotland, which was on the brink of state-mandated consolidation only 15 months ago, has turned the corner. School officials are encouraged by a hefty 20 percent jump in enrollment this year.)

Timbo, like other local districts, hasn't been satisfied with simply getting by, but has worked for - and achieved - academic excellence. It's also stretched its limited dollars by taking advantage of a variety of grant programs; these, in turn, have enabled the district to improve its facilities and expand the educational horizons of its young people.

Timbo officials have great faith in the school system and hopes for its future.

Do local voters share this confidence? We'll find out next Tuesday.

## Capitol Report

By Winston Bryant, Lieutenant Governor

Suddenly, we're reading and hearing a lot about the Fair Tax Amendment. It's about time, considering the measure's importance to most people in Arkansas. I support the Amendment and hope the people will be allowed to vote on it November 8, because it would make taxation in Arkansas fairer to average families. It has the added advantage of removing the personal property tax on household goods and the accompanying hassle of annual assessment with the long lines we face each April.

Most important, the new law would make it just as difficult to raise sales tax as any other major tax. Up to now, it has taken a 75 percent legislative vote to raise income and corporate taxes, but only a majority - or 51 percent - to raise the sales tax. It is not surprising, then, that the big tax increases we've seen in the

last few years have been in sales tax. Average wage-earners pay out a higher percentage of their income in sales tax than people with higher salaries, so they have borne the burden of the last few increases. Fair Tax would require a 60 percent approval of the General Assembly to change any taxes. It is time for a system that would make it less tempting to cut into your grocery budget.

A more immediate advantage would be to end the tax on household goods. By also allowing cars to be assessed at the time car tags are purchased, the new law would end the assessment lines most Arkansans face each spring.

Criticism of Fair Tax falls into the "what if" category:

"What if you have to pay property tax on your new car at the same time you register it? Won't that mean a higher cost for a new car?" Only in the sense

that the property tax would come due in the same month as the registration costs and that you'd pay immediately on the new car as opposed to waiting 18 months for the bill to catch up with the charge. If you're already paying property taxes on your car, you could finally be sure that everyone else is, too. The current system allows 15 percent of the drivers to dodge the tax by moving before the deadline.

"What if they make us pay two years of car tax bills at once?" Unless you are already delinquent on the first year, this is just not going to happen.

"What will be done to regain the money lost when the household tax is eliminated?" Look back at the 15 percent who fail to pay property tax on their cars. Collecting this and adding effi-

Continued on Page 11

## Left-handers know they're right

My wife Judy believes that she's been discriminated against all her life, not because of her race, creed, color, or sex, but simply because she happens to favor her left hand over the right.

Like the character who spoke the famous line in the movie, "Network", a few years ago, she's mad as hell and she's not going to take it any more - that is, if she only knew what to do about it. She thinks this unfair treatment has gone on long enough.

Not too many years ago parents believed it was unnatural and unlucky for their kids to be left-handed. They often tried to force their offspring to use the more acceptable right hand and some of them went so far as to tie kids' left hands behind their backs. Judy says her old fashioned mother tried to discourage her using the left hand but she never went that far.

About one out of every ten people are born left-handed. That's almost the exact ratio of lefties in my family; out of 11 kids my folks raised, only one, my sister Bertha is left-handed. Her late husband, Lee, was also left-handed and so is her son, Jerry.

We know that if both parents are left-handed, 50 percent of their kids will be too. But if both parents favor the right, only two percent of the offspring will be southpaws.

Many of the every day things we righties take for granted are often problems for lefties. Bus coin boxes are right handed and so are phonograph tone arms, corkscrews, wrist watches and scissors. Many lefties are the butt of jokes about "left-handed monkey wrenches." Even carousels are right-handed; you can't reach for the brass ring with your left hand. My wife's pet peeve is the measuring cup. She can adjust to everything else but this. The list is endless. Today, about the only thing that actually favors left handers is the toll booth.

According to a little book I came across, "The Natural Superiority of the Left Hander," the one person in ten who is a leftie often thinks they are sort of special.

And they might well be. Anywhere you look, lefties are a rarity. Even most plants are "right-handed." The honeysuckle is one of the few climbing plants that turns to the left.

However, there's a town of 450 called Left Hand, West Virginia where every single resident is left-handed.

Lefties probably fared fine through the Stone Age but with the Bronze Age came manufacturing and since 90 percent of the workers were right-handed, that's the way tools were made.

It was in the middle ages that lefties first experienced discrimination. All knights were right-handed since all their armor was made for right-handed swordsmen only.

That long ago bias is still with us and this is what riles my mate. "You would think it would have worn itself out by now," she seethes.

If you are rich and powerful, you can ignore all the prej-

Slabtown Sojourner



BY E.C. COPELAND

udice. It never bothered Ramses II, who was always drawn left-handed; and Ben Franklin actually gloried in being left-handed - he wrote and published a treatise in favor of the left hand. James Garfield, Harry Truman and Gerald Ford were all left-handed presidents.

Other left-handed notables include: Edward R. Murrow, H.G. Wells, Michaelangelo, Charlie Chaplin, Greta Garbo, Shirley MacLaine, Marilyn Monroe and George Burns.

In sports, it often helps to be left-handed. "Southpaw" pitchers are said to have a natural curve ball. (The word "southpaw" was coined in 1890 when the baseball diamond in Chicago was sited to protect the batters from the afternoon sun. The pitcher faced west, and if he was left-handed, he was known as a southpaw.)

Swimming also favors the lefties. Neurologists have shown they adjust easier to underwater vision. Mark Spitz, a leftie, won seven Olympic gold medals.

For some unclear reason lefties make fantastic tennis players - about 40 percent of the pros are left-handed.

At one time American Indians may have been the world's largest single group of left-handers - there's evidence that one in three favored the left hand. The Incas thought being a leftie was lucky.

There's a high incidence of left-handed twins, but it is rare to find both favoring the left. There's more left-handed boys than girls and older mothers are more likely to produce left-handed children than younger mothers.

Some experts claim they can spot lefties in infancy by the whorl of their hair which twists counterclockwise. If a child favors its left, it will usually show by the age of five.

Psychologists are fascinated with left-handers. They're constantly studying them and coming up with reasons not to be left-handed. For example, it has been shown that lefties tend to be stubborn, oversensitive, impulsive and embarrassing to the family. They have difficulty following directions and completing projects. They're also likely to have speech problems. And if this isn't enough, lefties are likely to continue bedwetting beyond the age of three.

Generally speaking, people with a dominant "thinking" brain become right-handed while those with a "feeling" brain become left-handed. Maybe this is why cold, heartless conservatives are called "right-wingers" while dreamy, bleeding heart liberals are known as "left-wingers."

Most lefties, because they are dominated by a different kind of brain, are a distinctly different kind of people. They think differently, even when solving the same problem as right-handers. Righties adapt comfortably to abstractions while lefties tend to translate everything into visual imagery. Right-handers tend to think linearly, linking their ideas in logical order. Left-handers are more apt to think holistically, skipping over the details.

When NASA went searching for the kind of imaginative, super-reliable, multi-talented people they needed to explore the moon, they found that one out of every four Apollo astronauts selected turned out to be lefties.

Data like this suggests that lefties are almost a different species, so maybe that's why they consider themselves special. I know my wife is special.

In their hearts, lefties know they're right.

## PISTOL PETE

By Mike Lancaster



## News from Stone County's past...

### 30 Years Ago

Local talent and entertainment at the County Fair brings back memories of old times. I can well remember the best times of my childhood was going to the county fair and the fourth of July picnic. There friends and neighbors were active in providing entertainment. They were enthusiastic and filled with community spirit. This same enthusiasm and community spirit was revived here in Stone County the last two weeks. The people and organizations are busy getting not only exhibits ready for the County fair which will be September 18, 19 and 20, but they are preparing entertainment events.

Mrs. Karl Neal, executive secretary and librarian of the Arkansas Library Commission, accompanied by Mrs. Meslin Moore, are scheduled to meet with the Mountain View Lions

Club and other civic leaders tonight at the P-X Cafe.

The meeting was arranged by the Lions Club in order that Mrs. Neal can explain the way Stone County will be eligible for state and federal aid in securing a library.

Mrs. Meslin Moore, a former resident of Stone County, is now chairman of the State Library board and is very interested in securing this aid for Stone County.

Mr. and Mrs. Glen Rayls and children, Dwight and Belinda, of McCamey, Texas, are visiting Mrs. Rawls' mother, Mrs. Dessie Horton. Mrs. Horton honored her little granddaughter, who was two years old September 2, with a birthday supper. Those attending were Mr. and Mrs. A. B. Bagby and their grandson, Lynn; Mr. and Mrs. Tollie Copeland; Mr. and Mrs. Felix Wallis.

### 20 Years Ago

The Mountain View School board has been asked to review the possibility of changing the school district lines at its next meeting which is scheduled for Monday night.

District number one has asked that the line be moved further toward Mountain View in order to take in a few students that live on highway 14.

A petition was circulated in 1949 allowing the children living in that particular area to go to the Fifty Six schools, but the boundary lines were never recorded as being changed. Now the question has arisen as to which district the children are supposed to go to school. They are now attending the Mountain View schools.

Efforts to iron out the problems of getting the proposed Mountain View Cultural Center underway

were again discussed at a meeting Tuesday in Little Rock.

A proposed contract granting the management rights to a New York firm was refused by the Economic Development Administration recently because of what it termed an inadequate repayment schedule.

Mayor Tommy Simmons, along with commissioners Joe Wyatt and Von Rosa, attended the meeting which was scheduled to better inform the Cultural Center Commission about the reasons the contract had been turned down by the EDA.

The Mountain View Yellow-jackets were unable to get rolling in the season opener last Friday, and the Heber Springs Panthers recorded a lopsided 26-0 victory before a huge crowd on hand for the start of the second season here.

## Stone County LEADER

(USPS 522-320)

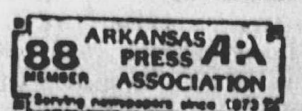
James R. Fraser Publisher/Editor  
Lori Freeze News Editor/Photographer  
Cheryl Dwyer Classified  
Ed Schuh Cartoonist/Photographer  
Neal Fraser Typesetter



Phone (501) 269-3841  
Published weekly on Wednesday.  
Office located on historic court square.

Subscription rates -  
\$13 per year in Stone and surrounding counties,  
\$20 per year out of area.  
Postage paid at Mountain View, Arkansas 72560

Postmaster: Send address changes to Stone County Publishing Company P.O. Box 509, Mtn. View, AR 72560



A steer protests as a cowboy proceeds to maneuver it to the ground during the bulldogging event at the rodeo Saturday night.

### Republicans to meet

The Stone County Republican Committee will meet Wednesday at 2 p.m. in the Senior Citizens Center. Anyone interested in the party is cordially invited to attend this meeting. For other information call 269-8227.

### Texas man arrested on drug charge

Larry Webb, 34, of Houston, Texas, has been returned to Stone County and charged with a violation of the Uniform Controlled Substance Act.

Arrest warrants were issued for Webb last June after the Stone County Sheriff's Department raided a marijuana patch near Alco. Arrested at that time was Jerry Harold Spiegle, 35, of Bay Town, Texas.

Webb was arrested in Houston on the Stone County warrants. He posted \$15,000 bond last week.

### Police

Continued from Page 1

Barnum was to present the proposal to the city council Tuesday night.

In other business the court voted 6-3 to allocate \$3,056 for tourism promotion to be matched with city funds and local business support.

The motion previously had failed because it did not receive the two-thirds majority necessary to allocate funds. Voting against the proposal Thursday night were Kathy Greenway, Pete Younger and Scott Branscum.

The court also approved a proposal to install a heat pump in the clerk's office to correct problems in the records room. Roger Parsons of Hinkle Heating and Air Conditioning told the court he had inspected the room and consulted with an engineer. They determined that the humidity level and temperature in the room promote the growth of mold on the old records, to which some people have an allergic reaction.

He recommended the installation of a heat pump and air cleaner to correct the problem and estimated it would cost about \$4,000. The court authorized him to install a system at a cost not to exceed \$5,000. Parsons said he would submit an official bid to the budget committee for approval before beginning work.

Also at the meeting, the court discussed applying for a historic preservation grant to restore the rock wall around the courthouse and make other changes to restore the historical aspects of the building.

In other business: Prosecuting Attorney Don McSpadden discussed a new drug prevention program to be administered through his office.

the court was reminded that a public meeting on the proposed Highway Corridor program is scheduled for September 20 at 7 p.m. at Arkansas College.

County Judge Coleman Gammill announced that the county had received a certificate from the Arkansas Industrial Development Commission for successfully completing the Economic Development Program that began in 1984.

## COUPON

**Nu-Way**  
Manager's Appreciation Special



29¢

16 oz. Box

**SUNSHINE KRISPY CRACKERS**  
Limit 1 with this coupon

Thank you Stone County.  
We appreciate your business!

## COUPON

FREE!

**Igloo 1/2 gallon Thermos Jug**

with 2 rentals of 4 movies  
(total of 8 movies)

If you rent as many as 4 movies at one time, our video department will validate this coupon. Return your validated coupon when you rent your next 4 movies and get your FREE thermos while supplies last.


4 movies rented



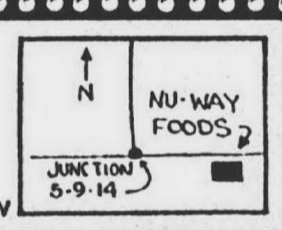
•5 year warranty

•Hot & cold drinks

Visit our Deli & Bakery for in-store specials every week!



## Nu-Way Foods



Located just past the junction of 5, 9 & 14 In Mountain View

# 25% OFF

# ALL JACKETS

NOW THROUGH SEPTEMBER 30

YOU SAVE 25% ON ALL FALL JACKETS IN STOCK!

|               |                                  |            |          |                  |
|---------------|----------------------------------|------------|----------|------------------|
| Size 2 to 4   | Boys' Reversible Jacket          | Reg. 17.99 | Less 25% | 13 <sup>49</sup> |
| Size 4 to 6X  | Girls' Reversible Jacket         | Reg. 22.99 | Less 25% | 17 <sup>24</sup> |
| Size 7 to 14  | Girls' Reversible Jacket         | Reg. 19.99 | Less 25% | 14 <sup>99</sup> |
| Size 7 to 14  | Girls' Polyurethane Vinyl Jacket | Reg. 22.99 | Less 25% | 17 <sup>24</sup> |
| Size 4 to 7   | Boys' Polyurethane Vinyl Jacket  | Reg. 12.99 | Less 25% | 9 <sup>47</sup>  |
| Size 8 to 20  | Boys' Unlined Racer Jacket       | Reg. 19.99 | Less 25% | 14 <sup>99</sup> |
| Size S to XXL | Lined Camouflage Parka           | Reg. 21.99 | Less 25% | 16 <sup>49</sup> |
| Size S to XL  | Men's Nylon Ski Vest             | Reg. 12.99 | Less 25% | 9 <sup>47</sup>  |

USE OUR CONVENIENT LAYAWAY

.No Service Charge .Minimum \$2.00 down or 10%

# McCroary

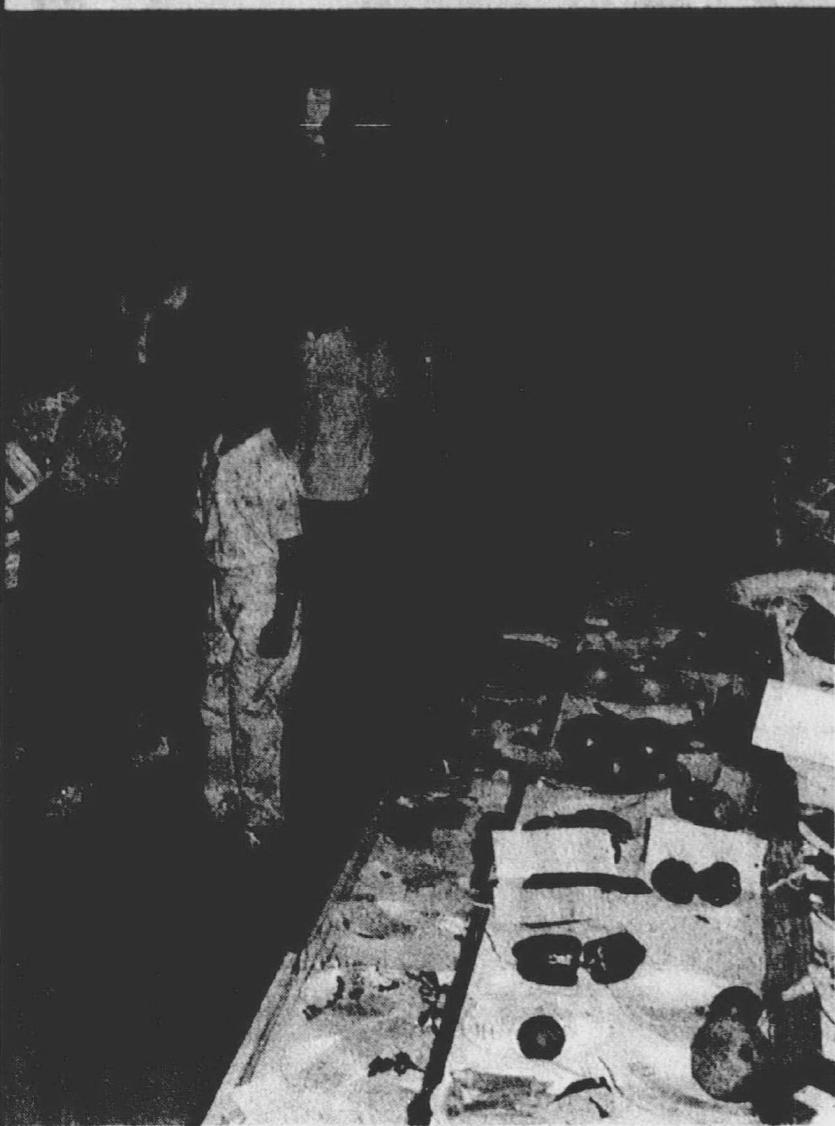
# AMERICA'S

5&10

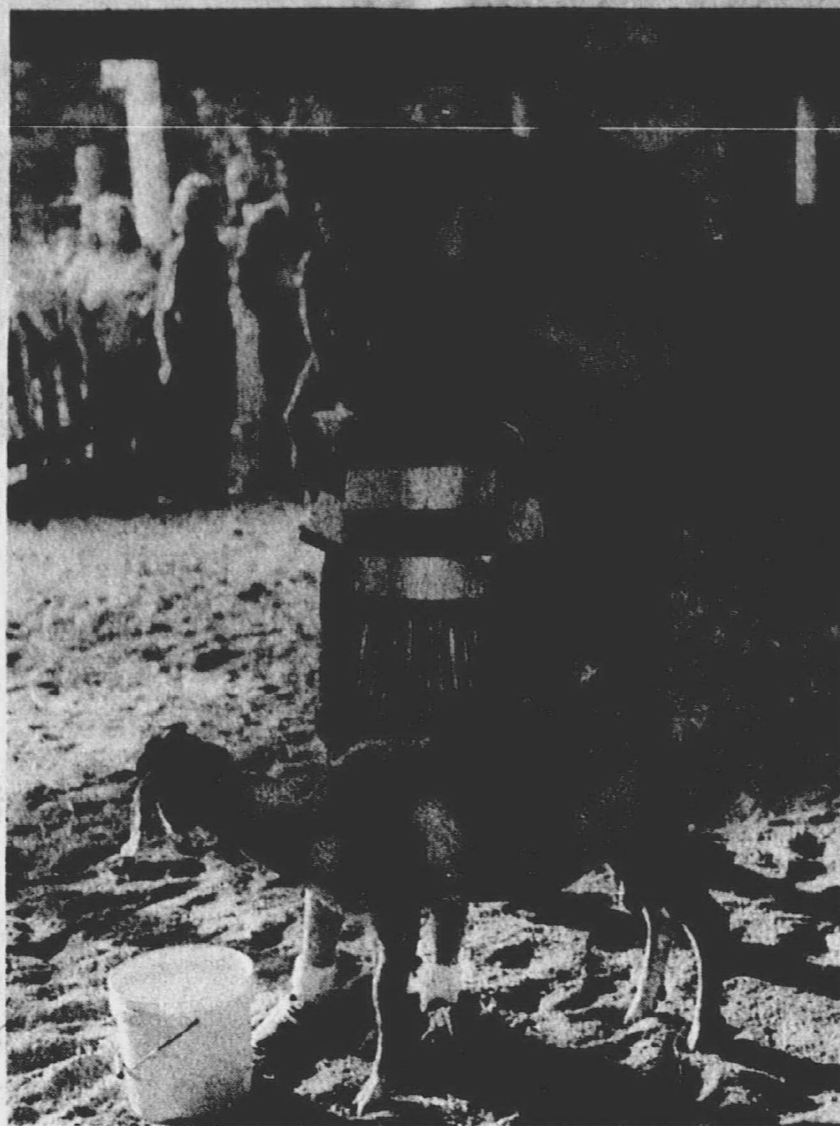


Store Hours: Mon.-Sat., 8:30 a.m. to 6 p.m. - Sunday: 12 noon to 4 p.m.  
Junction 5, 9 & 14 - Mountain View - 269-4388

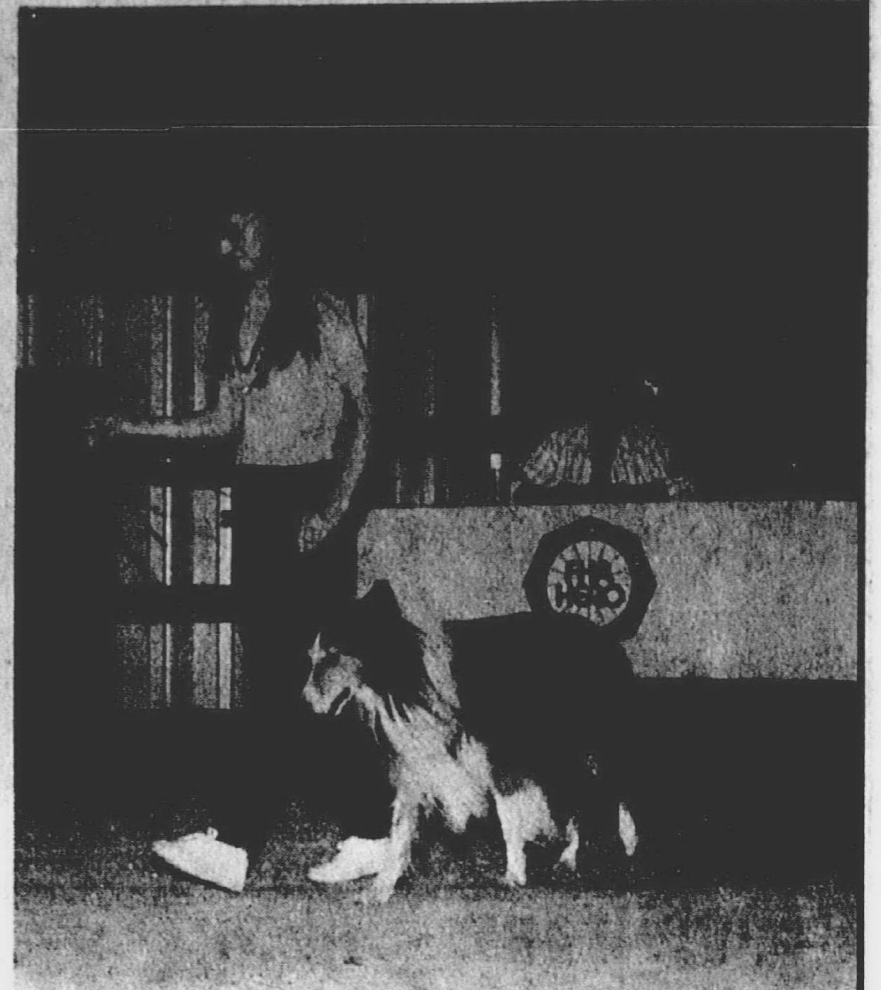
# New events are included in county fair activities



School children received a special tour of the exhibits Friday.



Stephanie Bisulco waits patiently while the livestock judge inspects her Nubian goat.



Donna Morrison's Sheltie Collie won Best of Show in the Youth Pet Show.

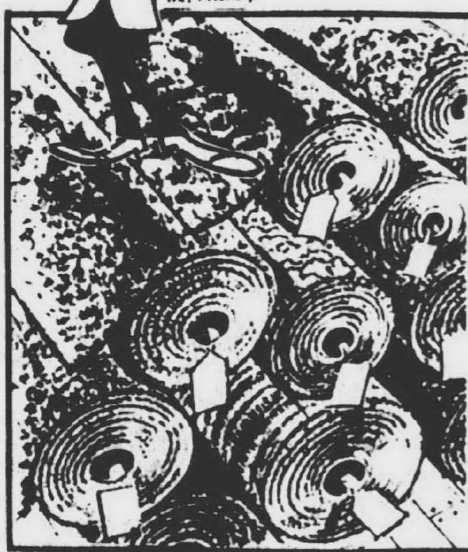


Myrtle Norricks' flowered quilt received the Best of Show award in the quilts and afghans division.



Eddie Vallery and Floyd Wallis won the cross cut saw competition in the Forestry Contest, which was conducted by personnel from the Arkansas Forestry Commission.

## END OF SUMMER CLEARANCE



**CARPET**  
As low as  
**\$399**

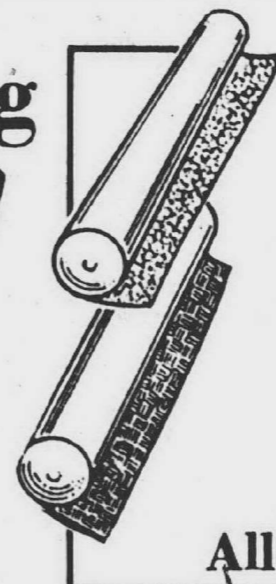
Sq. Yd.  
in stock only

other colors and  
styles available in  
our large collection  
of samples

FREE ESTIMATING!

Home Furnishing

# SALE

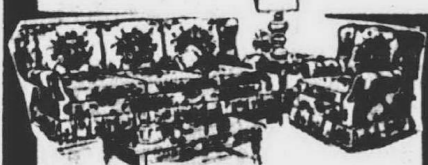


Wall paper sale

# 50% off

All wallpaper in stock

### Storewide Price Reductions!



**Sofas  
& Chair**  
Reduced  
As low as  
**\$679**

**Recliners**

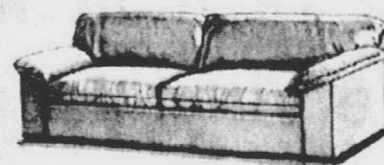


As low **\$279**

**Glider  
Rockers**

starting at

**\$159**



**Sleeper  
Sofas**

In stock

**\$429**

**Mirage  
Water  
Beds**

Tube type water bed  
Full size

**\$379**



**All  
lamps**  
In Stock

**1/2 Price**

**Bar Stools - Glider Rockers - Ceiling Fans - All Reduced!**

Financing available

Same day delivery

**Sale prices good through September 30**

# MODERN BUILDERS HOME CENTER

Hwy 14 E.

Your complete home improvement center

269-3808

# 'Jackets fall to Highland 24 to 8

Costly mistakes told the story Friday night as the Mountain View Yellowjackets fell to the Highland Rebels 29 to 8 in a game that was closer than the score would indicate.

Mountain View received the opening kickoff and moved the ball well, making one first down before being set back by a delay of game penalty and being forced to punt. On Highland's third try from scrimmage, Rick Crisman intercepted a pass and returned the ball to the Mountain View 41.

Quarterback Shannon Caraway picked up a first down after a nifty fake and a 12 yard run. After a 9 yard scamper by Caraway, Sophomore halfback Carl Werb made another first down for the 'Jackets at the 31. Sullivan got the ball down to the 22 on another run, but then, the first of several costly turnovers occurred, a pass interception at the 21.

Highland mounted a drive that finished off the first quarter and ended in a touchdown on an 11 yard sweep by Tim Branscum. The kick was good and with 10:29 left in the half, the Rebels led 7 to 0.

The 'Jackets troubles had just begun. On Mountain View's second play, a fumble was recovered by Highland at the 'Jackets 33. The Rebels moved to the Mountain View 14, but the 'Jacket defense held and Mountain View took over on downs. But appar-



Things just didn't go right for the Mountain View Yellowjackets Friday night at Highland as Mountain View fell to the Highland Rebels 29 to 8. Turnovers played a large role in the game which hurt Mountain View on several scoring opportunities.

ently Mountain View was not destined to get out of trouble. A bobbled snap was ruled to be recovered by the Rebels at the 18. On Highland's first play, Branscum ran in for the score. A two point conversion made the score 15 to 0.

Mountain View returned the kick to the 26 and mounted an impressive drive, but fate was not with the 'Jackets, and time ran out in the first half just as Vance Keaton ran the ball to the Highland 11 yard line.

Highland received to open the second half, but couldn't move and kicked to the Mountain View 21. The 'Jackets gave the ball right back to the Rebels on another fumble at the 23. The Yellowjacket defense held and

the Rebels kicked into the end zone. Then, at the worse time possible, another 'Jacket fumble was caught in the air, and the Highland defensive back raced in for another cheap touchdown. The kick was good bringing the score to 22 to 0.

Mountain View moved to the Highland 38, but the drive was stopped on downs. A 65 yard run by Highland put the ball on the Mountain View 8 yard line, then punched the ball in from the 1 for the score. The extra point kick made the score Highland 29, Mountain View 0.

Late in the fourth quarter, Mountain View got a break and recovered a Rebel fumble at their own 30. Darryl Sullivan scored the 'Jackets' only touchdown then caught a Shannon Caraway

pass for a two point conversion with 2:46 left in the contest. The 'Jackets recovered a Rebel fumble, but the break came too late and the final score stayed at 29 to 8.

Mountain View had a total offense of 212 yards with 191 rushing and 21 passing compared to 263 total for Highland. Leading rusher for the 'Jackets was Darryl Sullivan with 66 yards on 14 carries. Shannon Caraway rushed for 65 yards on 16 carries. Caraway completed 4 of 11 passes for 21 yards.

The leading tackler was Trey Tinkle with 8 tackles and 7 assists. Carl Werb made 6 tackles and 5 assists.

The Yellowjackets go on the road again this week to face Hector. Kick-off is at 7:30.

# Junior Yellowjackets win season opener with Heber Springs 14-0

The Mountain View Junior High Football team got off to a good start last Thursday by defeating Heber Springs 14 to 0.

The Junior 'Jackets scored in the first quarter on a Todd Avey sweep for 6 yards. The only other score in the game occurred in the third quarter when defensive end Steve Criswell picked up a fumble and raced 45 yards for a touchdown.

Mountain View rushed for 101 yards for the evening. Todd Avey

was the leading ball carrier with 74 yards on 17 tries.

Jim Ed Cash was the leading tackler with 6 tackles and 2 assists. Adrian Lovenstein had 5 tackles. Coach Jim McCarn also praised the defensive work of Greg Vanatter and Kevin Green who had 4 tackles each.

The Juniors play in Mountain View again this Thursday and will face the Salem juniors. There will be no 7th grade game this week.

**The Signal Hill Music Shop**  
N.W. Corner of Square in the two story house  
269-4580

**\*\*\*INSTRUMENT SALE\*\*\***  
**Lay-a-way for Christmas**  
**at no extra cost.**

**\*\*\*GUITARS\*\*\***  
Dreadnaught • Classic • 12 string • Dobros  
by  
Alvarez • Washburn • Blueridge • Dobro • Regal  
Reg. Price - \$125 to \$1,100  
**20% discount with this ad**

**\*\*\*ALSO\*\*\***  
Banjos • Autoharps • Mandolins  
Fiddles • Dulcimers • Irish Lap Harp  
**20% discount with this ad**  
You must show this ad to get your  
**20% discount.**

# WAL-MART

Sale Date: Wednesday, Sept. 14, through Saturday, Sept. 17  
Store Hours: Monday - Saturday, 9 a.m. to 9 p.m.  
Location: Mountain View



WAL-MART'S ADVERTISED MERCHANDISE POLICY—It is our intention to have every advertised item in stock. However, if due to any unforeseen reason, an advertised item is not available for purchase, Wal-Mart will issue a Rain Check on request, for the merchandise to be purchased at the sale price whenever available, or will sell you a similar item at a comparable reduction in price. We reserve the right to limit quantities. Limitations void in New Mexico.

# Baby Week

**Guess the amount of candy corn in the jar. win \$25 worth of merchandise in Baby World. September 12-17**

Reg. 6.93  
**5.93**  
Infant Boys Or Girls Tops With Pants  
Features 3/4 or long sleeve screen printed tops and corduroy pants with piping on side of leg. Cotton/polyester top. All cotton pants. Sizes 12-24 Months.

**2 For \$5** Reg. \$3 Ea.  
Infant/Toddler Boys Or Girls Boxer Pants  
Features all around elastic waist. Choose from denim, corduroy or twill in an array of colors. Polyester/cotton. Sizes 12 Months-4 Toddler.

Jog Togs Fleece Coordinates  
• 6 months to 4 toddler  
Reg \$3.50  
Sale **\$3**

Infant/Toddler 2 Piece Pajamas  
Various styles. Winter weight all polyester. Sizes 9-18 Months and 2-4 Toddler.  
**\$5** Reg. 5.86

Tot Wheel Walker  
Reg 17.43  
Sale **\$16**

Graco High Chair  
5 Position, easy on-off tray. Safety seat belt with crotch strap. Large wingback seat. Folds for easy storage. No. 62109.  
**29.96** Reg. 33.96

Gerry Portable Stroller  
Washable polyester/cotton seat. Portable, lightweight steel frame. No. 192-02.  
**17.96** Reg. 19.94  
MADE IN THE U.S.A.

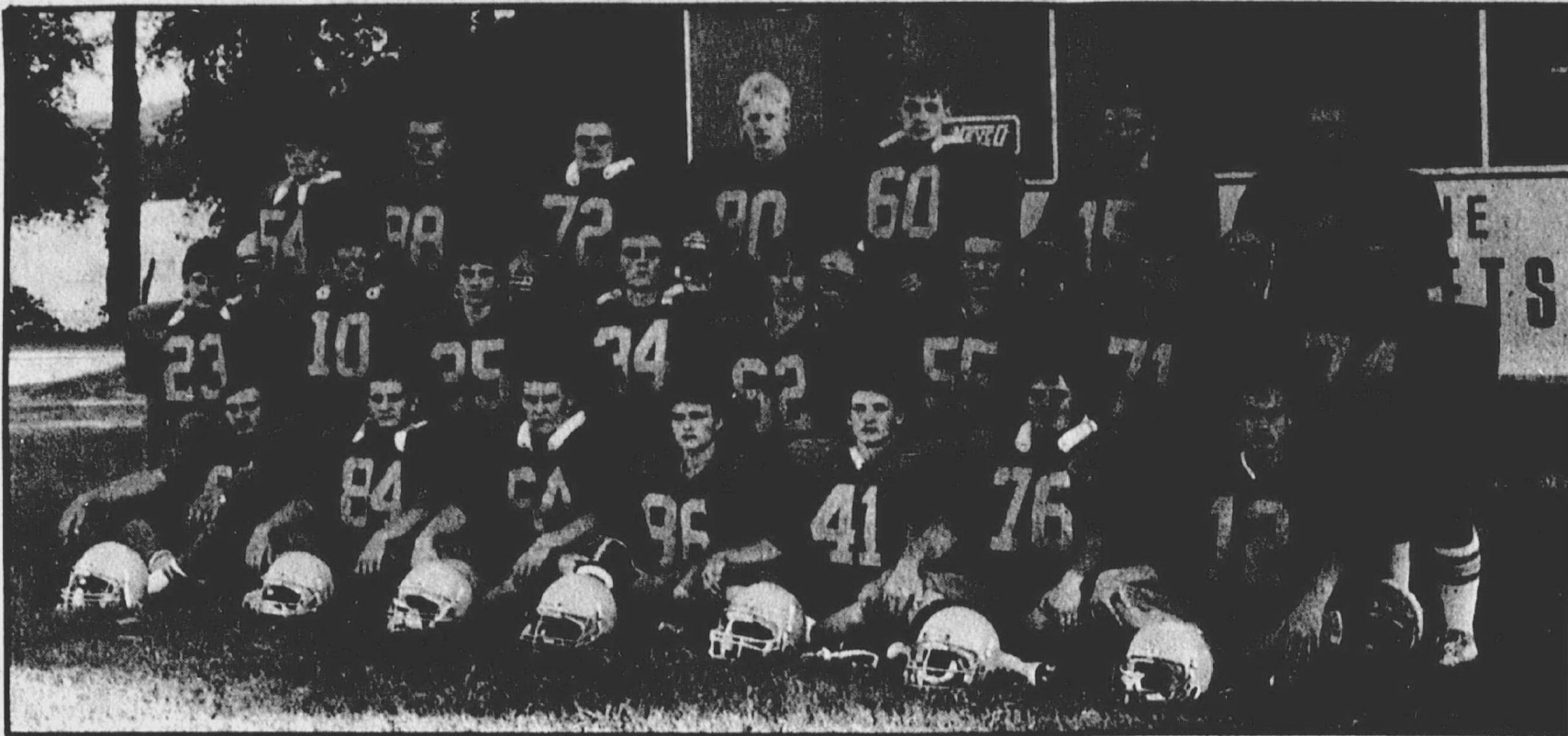
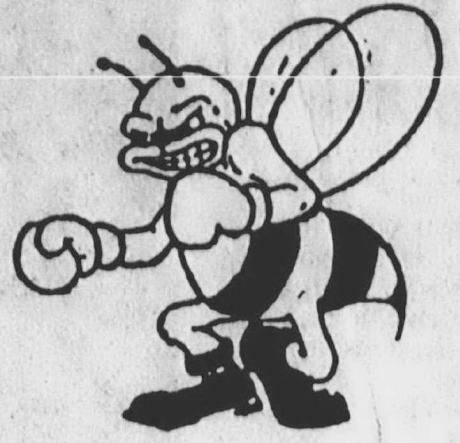
Century Toddler™ Commander Car Seat  
No tether required. Six adjustments. Meets Federal Safety Standards No. 4813NT.  
**17.83** Reg. 19.96  
MADE IN THE U.S.A.

Toddler Joggers  
Smooth easy care upper. Easy fit VELCRO® closures. Padded ankle collar.  
**\$5** Reg. 6.96

SAVE 25%  
2 Pack Cuddie Receiving Your Choice  
Blankets 30x30 Inches. All cotton **2.96**  
Thermal Receiving Blanket 30x40 Inches. Assorted colors. All cotton. Reg. 3.96

SAVE \$5.00  
Graco Playard  
36x36 Inches. Draft shield. Patterned vinyl pad. Folds easily for storage. No. 6315-9.  
**34.96** Reg. 39.96  
MADE IN THE U.S.A.

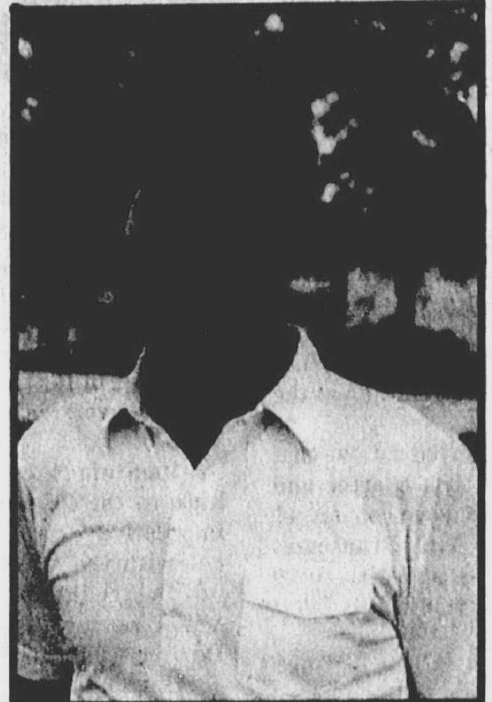
# GOOD LUCK ! Mountain View Yellowjackets in the 1988 season



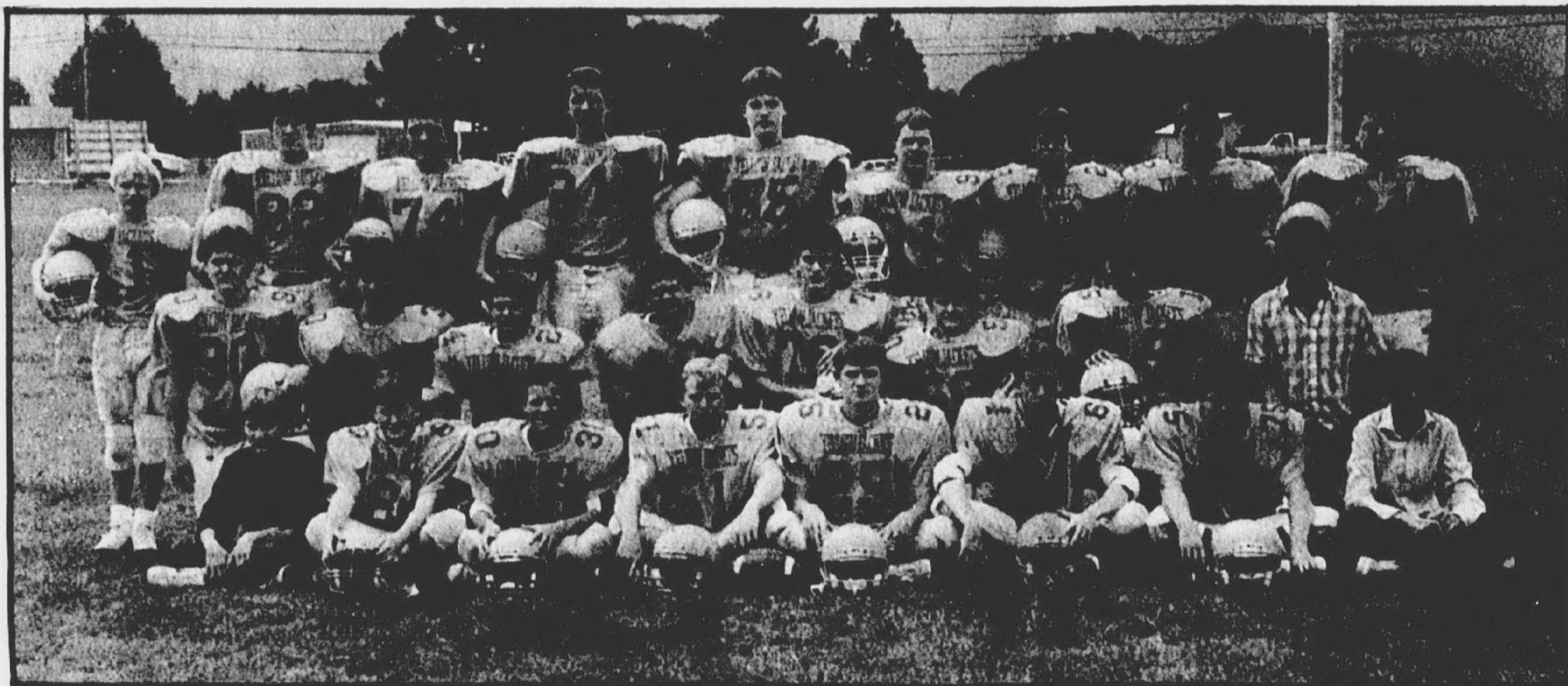
**Senior Team**

Front row, from left: Paul Cornwell, Ernie Gillihan, Bart Broyles, Ramey Futrell, Carl Werb, James Newman, Shane Cousins. Second row, from left: Trey Tinkle, Darryl Sullivan, Vance Keaton, Rick Crisman, Matt Thomas, David Shipman, Jamie Woody, Ladd

Sims. Back row, from left: Andy Tinkle, Shaye Fountain, Shad Pearce, Tommy Goforth, Shane Wade, Shannon Caraway, Dale Hodges. Not pictured: Bobby Engle.



Head Coach Ron Willis



**Junior Team**

Front row, from left: Stephen Callahan, Manager; Stacy Buchanan, Travis Adcox, Mike Black, Jeff Banres, Kevin Martin, Bryan Craig, Tommy Franks, Manager. Second row, from left: Chris Sprayberry, Steve Criswell, Willie Cox, Jeff Nesblitt, Jamie Richardson, Jimmy Carter, Kaleb McClain, Hank Steed, Manager.

Back row, from left: John Rhodes, Adrian Lovesteln, Rick Fountain, Jimmy Summers, Jim Ed Cash, Todd Avey, Bubba Gaffney, Greg Vanatter, Jamie Vickers. Not pictured: Kevin Green and Hubert Engle.



Assistant Coach Jim McCarn



**7th Grade Team**

Front row, from left: Junior Smith, Scott Rector, Chuck Melton, Brian Sullivan, Willie Johnstone, Tommy Rodgers, Charles Gosser, Jesse Foster. Second row, from left: Rlan Heck, Brad Griffith, Kris Storey, Marty Apple, Charlie Foster, Corey Cates,

Britt Pearce. Back row, from left: Aman Minick, Michael Everett, Keith Morgan, Chad Abernathy, Sharrell Bolln, Jason Vickers, Michael Woodard, Daniel Ivy, Manager.



Athletic Director Von Dean Jeffery

|                                                                                                              |                                                                                                              |                                                                                                    |                                                                                                                                                   |                                                                                        |                                                                                                     |
|--------------------------------------------------------------------------------------------------------------|--------------------------------------------------------------------------------------------------------------|----------------------------------------------------------------------------------------------------|---------------------------------------------------------------------------------------------------------------------------------------------------|----------------------------------------------------------------------------------------|-----------------------------------------------------------------------------------------------------|
| <b>SHELTER INSURANCE</b><br>LIFE HEALTH HOME CAR<br>Edwin Luther<br>Agent<br>Main St.<br>Mtn. View, AR 72569 | <b>STEVEN R. PERRYMAN</b><br>C.P.A.<br>P.O. Box 750 Mountain View<br>269-4349                                | <b>Brown's</b><br>Chiropractic Clinic<br>Hwy 66 West<br>Good luck for a great 1988 season          | <b>Ozark U.S.A.</b><br>"Good luck Yellowjackets!"<br>269-4391                                                                                     | <b>J&amp;L Market</b><br>269-8024                                                      | <b>Brownlee &amp; Associates</b><br><b>REALTY</b><br>We're behind you 100%.<br>Go team!             |
| <b>Ramsey</b><br>TRUE VALUE<br>HARDWARE<br>269-3284                                                          | <b>The Shoe Center</b><br>118 East Main Street<br>"Shoes for the Entire Family"<br>269-8300                  | <b>McClung Ford</b><br>Jct. 5-9-14 269-3866<br>Here's hoping you roll to a great season.           | <b>Dearien Building Supply</b><br>269-8200                                                                                                        | <b>JACK'S</b> Fishing Resort<br>on the White River<br>585-2211<br>Canoeing and rafting | <b>Dr. Kenny Wyatt</b><br>"Here's to a great 1988!"<br>269-3610                                     |
| <b>Bank of Mountain View</b><br>FDIC 269-BANK                                                                | <b>Red Bud Inn</b><br>Ph. (501) 269-4375<br>May 8/9/14 Mtn. View, Ark. 72569<br>"Go team!" from Renee George | <b>Con Agra Frozen Foods</b><br>"We're behind you 100%!"                                           | <b>Yellowjacket Drive-In</b><br>"We'd like to express our strong support of the Yellowjackets. Come by after the game."<br>Hwy 5-9-14 N. 269-4260 | <b>QMC</b><br>Solid Oak Tables<br>County Road 227<br>Phone 269-4298                    | <b>Dearien Realty &amp; Insurance</b><br>Main Street<br>269-3869                                    |
| <b>White River Ins.</b><br>WEST MAIN<br>Clerk and Jo Chandler<br>Judy Brock • Debbie Macoy<br>269-4357       | <b>ALTMAN MOTOR COMPANY</b><br>Highway 5 North<br>Mountain View 269-3861                                     | GIFTS • FINE JEWELRY<br><b>Best Drug Store</b><br>413 MAIN STREET<br>MOUNTAIN VIEW, ARKANSAS 72560 | <b>McNeill's Fastbreak</b><br>"Good luck Yellowjackets!"<br>269-8211                                                                              | <b>Mtn. View Abstract &amp; Title Company</b><br>Main Street<br>"Go Jackets"           | <b>NU-WAY FOODS</b><br>Hwy 14 East<br>Order a party tray and sweets for your post-game celebration. |



Band Director Clay Cartwright



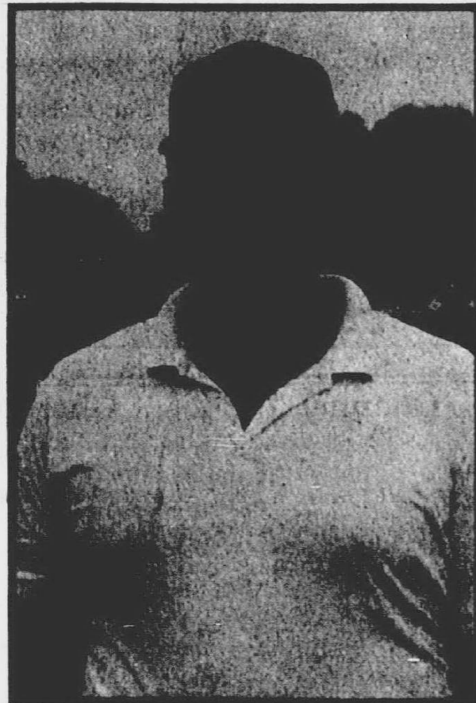
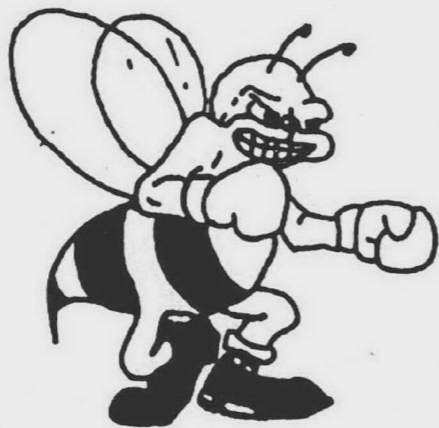
**Band**

Front: Jeff Haney, Drum Major. Front row, from left: Sara Phillips, Missy Turner, Renee George, Jennifer Logan, Chris Stone, Virginia Lambrecht, Hanna Cochran, Millssa Simons, Thereasa Archer. Second row, from left: Veronica Baker, Jenni Brown, Mellssa Fletcher, Kristy Storey, Kim Vickers, Valarie Holt, Mary

Beth Ford, Susan Green. Third row, from left: Amber Macey, Julie Brown. Fourth row, from left: Mark Haney, Jerad Cartwright, Jason Giberson, Katie Bracklin, Vicki Davis. Back row, from left: John Rhoades, Brian Long, Emmett Hart, Robert Davis, Heidi Robinson.



Coach John Calaway "Eye in the sky"



Assistant Coach Jackie Fendley

**FOOTBALL  
SCHEDULE**

**SENIOR FOOTBALL**

SEPT. 2-POCAHONTAS H  
SEPT. 9-HIGHLAND A  
SEPT. 16-HECTOR A  
SEPT. 23-BATESVILLE A  
SEPT. 30-MARSHALL A  
OCT. 7-GRENBRIER H  
OCT. 14-CLINTON A  
OCT. 21-VILONIA H  
OCT. 28-BALD KNOB H  
NOV. 4-HEBER SPRINGS A

**JUNIOR FOOTBALL**

SEPT. 8-HEBER SPRINGS H  
SEPT. 15-SALEM H  
SEPT. 22-MARSHALL A  
SEPT. 29-MTN. HOME A  
OCT. 6-MARSHALL H  
OCT. 13-YELLVILLE H  
OCT. 20-SALEM A  
OCT. 27-MTN. HOME A  
NOV. 3-CLINTON A



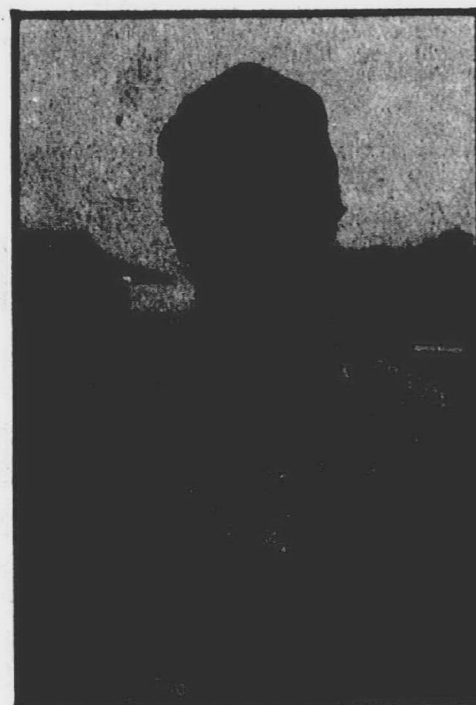
**Senior Cheerleaders**

Left to right: Lori O'Brien, Candi Long, Alicia Sullivan, Lanya Sutterfield, Latricia Bullard, Bolln, Misty Jeffery, Monica Norman, Leslie



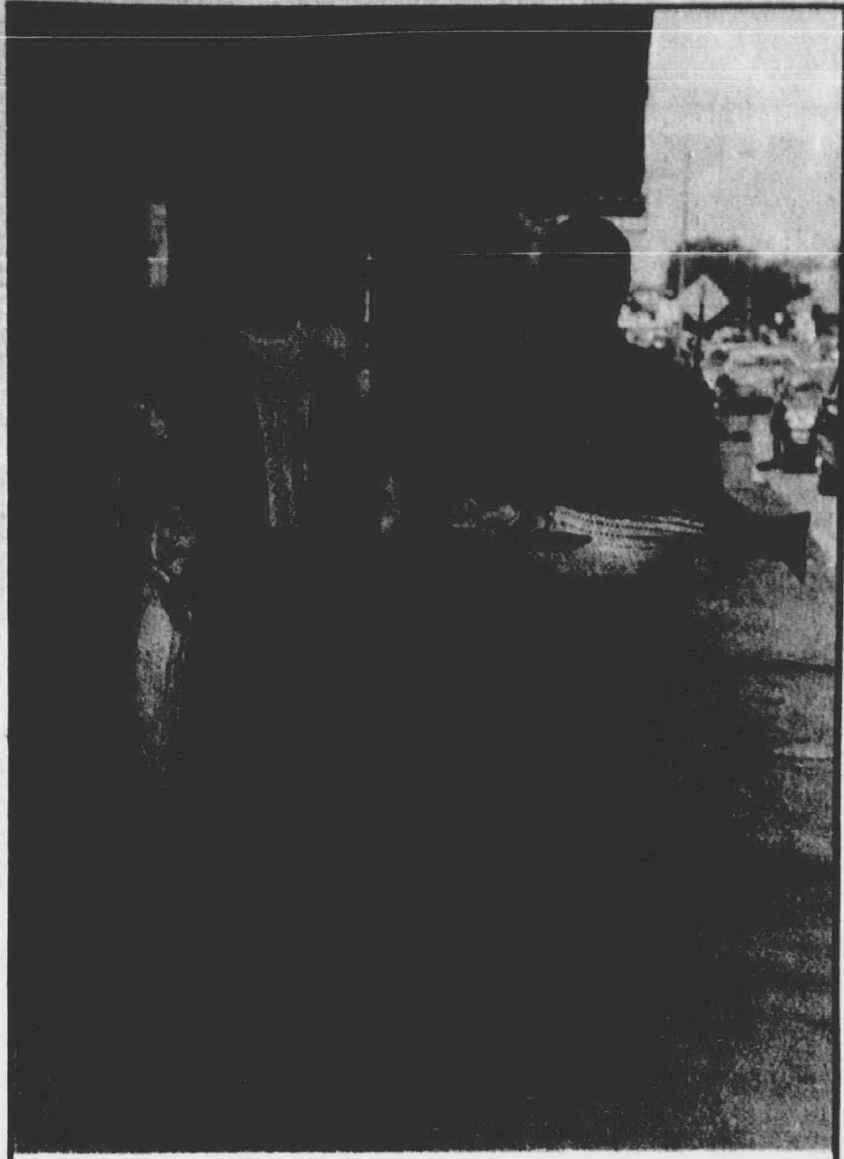
**Junior Cheerleaders**

Left to right: Marletta McClung, April Slayton, Long, Michelle Sisk, Missy Turner, Heather Long, Natalie Altman, center, Tonya Dayberry, Sunny



Student Coach Terry Mote

|                                                                                                                                                        |                                                                                          |                                                                                                                                                                         |                                                                                                                                                |                                                                                            |                                                                                                                                             |
|--------------------------------------------------------------------------------------------------------------------------------------------------------|------------------------------------------------------------------------------------------|-------------------------------------------------------------------------------------------------------------------------------------------------------------------------|------------------------------------------------------------------------------------------------------------------------------------------------|--------------------------------------------------------------------------------------------|---------------------------------------------------------------------------------------------------------------------------------------------|
| <p><b>Stone County Propane</b><br/>269-3818<br/>Good luck Yellowjackets!</p>                                                                           | <p><b>G &amp; B Texaco</b><br/>Highway 14 East<br/>269-8554</p>                          | <p><b>Mountain View Telephone Company</b><br/>269-3232</p>                                                                                                              | <p><b>Whitfield Tires</b><br/>Keep rollin' Jackets!</p>                                                                                        | <p><b>WAL-MART of Mountain View</b><br/>We support the Yellowjackets</p>                   | <p><b>Sylamore Dental Lab</b><br/>269-4243</p>                                                                                              |
| <p><b>Mountain View Custom Butchering</b><br/>"Good luck Yellowjackets"<br/>PHONE (501) 269-3063<br/>ROUTE 73 BOX 421 MOUNTAIN VIEW ARKANSAS 72590</p> | <p><b>Mountain View Pawn Shop</b><br/>West end of McClung Ford Building<br/>269-8127</p> | <p><b>Adams Feed &amp; Supplies</b><br/>Highway 14 East<br/>269-3894</p>                                                                                                | <p><b>YOSHUA'S OZARK RESTAURANT</b><br/>"Good luck Yellowjackets"</p>                                                                          | <p><b>FERRELLGAS</b><br/>"Good luck from the Ferrellgas team!"</p>                         | <p><b>Catfish House &amp; Mtn. Music Theatre</b><br/>Main Street 269-3820<br/>"Good luck Yellowjackets"</p>                                 |
| <p><b>Osark Video</b><br/>"Go Jackets Go!"</p>                                                                                                         | <p><b>Lackey Motor Company</b><br/>"Good Luck!"</p>                                      | <p><b>GARST FAMILY MEDICAL CLINIC PA</b><br/>NEEMA A. GARST, M.D.<br/>SIEVE W. GARST, M.D.<br/>PHYSICIANS &amp; SURGEONS<br/>269-4304<br/>"Good luck Yellowjackets"</p> | <p>Sting 'em Jackets!<br/><b>Kentucky Fried Chicken</b><br/>269-3900</p>                                                                       | <p><b>St. Jude Clinic</b><br/>NICHOLAS J. PIEDISCALZI, M.D.<br/>TELEPHONE 501-269-4336</p> | <p><b>Franks Construction</b><br/>"Good luck Yellowjackets"<br/>General Contractors<br/>Commercial-Utility Highway</p>                      |
| <p><b>Nixon Animal Hospital</b><br/>"Good luck Yellowjackets"</p>                                                                                      | <p><b>Coca-Cola Bottling Company of Arkansas</b><br/>Batesville, Arkansas</p>            | <p><b>Farm Bureau Insurance</b><br/>269-3889</p>                                                                                                                        | <p><b>Stone County Ironworks</b><br/>Forge ahead Yellowjackets!<br/>H.C. 73, Box 427<br/>Mountain View, AR 72590<br/>Hwy. 68 West 269-8108</p> | <p><b>STONE COUNTY MEDICAL CENTER</b><br/>Your center for medical care.<br/>269-4361</p>   | <p><b>Mtn. View Family Practice Clinic</b><br/>Dr. Terry Sutterfield and Dr. Ron Sutterfield<br/>269-4144<br/>"Good luck Yellowjackets"</p> |



Jarret Murphy, at left, and Gerry West, both of Mountain View, had a good night fishing last Tuesday, landing a 14 1/2 pound and two 12 1/2 pound strippers at Lake Norfolk. The two fishermen were using downriggers 40 to 45 feet deep near the dam. The large fish was caught by West around 9:30 p.m.

## This week at the Center

The following is a schedule of Ozark Folk Center performers for the week of September 13 - September 19.

Performers may change without notice due to last minute illness and schedule conflicts.

Beginning Monday, September 5, the evening musicals will move to the Small Auditorium Monday through Thursday nights during September. There will be no further regular Sunday night musicals for the remainder of the season. Special gospel concerts are scheduled for September 18 and October 9.

**Tuesday, September 13:** Mike McGhee, M.C.; Golden Years, Kathy Sutterfield, Hank and Eulaine Blumenthal, Bill Sky Family, Comer and Deb Mullins, Art Flatt, Kim Lowe and J.C. Bonds, J.L. Woodruff, Judy Logan, Walter and Julia Case, Bill Ford.

**Wednesday, September 14:** Hank Blumenthal, M.C.; Leatherwoods, Hank and Eulaine Blumenthal, Kim Lowe and J.C. Bonds, Tina Wilcox and Marion Spear, Johanna Taylor, Theda Shirley, Chester Ross and Dee Godfrey, Jay Kaffka, Carroll Linn, Lester and Bess Kelley, Leon Jennings, Bill Jones, Hubert Engle.

**Thursday, September 15:** Dave Campbell, M.C.; Bob and Melissa Atchison, Gayland and Emagene Green, Mtn. Magic, The Copelands, Glenn Ohrlin, Faye McClure, Orville and Hazel Thompson, Edith Johnson.

**Friday, September 16:** Leatherwoods, John and Barbara Taylor, Tom Cleveland, Gospel Harvesters, Ozark Express, Ozark Overtones, Laura Lee McBride, Margie Earles, Adrian Parks, Leon Jennings, Walter Case, Kermit and Marie Taylor, Karen Sims.

**Saturday, September 17:**

## Volunteer VFD news

The Allison/Sylamore Volunteer Fire Department thanks all friends and supporters for making the fish fry on September 3 a huge success.

All proceeds go toward building another fire station to be located in the Levis Flat area. A special thanks to those who provided door prizes.

As with any successful endeavor, there must be laborers. We salute those who worked long and hard for the good of the community.

Anyone wishing membership information can contact Velma Farr at 585-2565.

The Oxley Volunteer Fire Department would like to thank the merchants and craftspeople who donated prizes for our fundraising events this summer. Because of their generous support we raised almost \$500 toward our fire department.

## Fox news

**By Burl Ticer**  
Mr. and Mrs. Horace Morrison of Little Rock visited Mrs. Ruby Morrison and Mr. and Mrs. Aubrey Berry last weekend. Miss Joan Carr of Utah has been a recent guest in the home of her parents, Mr. and Mrs. Paul Carr.

Mr. and Mrs. Rick Pepper, of Greenbrier, announce the birth of a son born in the Van Buren County Hospital in Clinton on September 1. The infant has been named James Edward. Maternal grandparents are Mr. and Mrs. Travis Castleberry and maternal great grandmother is Mrs. Irma Holland.

Mr. and Mrs. Rodney Owens and daughter Tasha of Ola visited Mr. and Mrs. Bill Bonds last weekend.

Mr. and Mrs. Frank Rushing, Neal and Craig visited relatives in Little Rock last weekend.

Mr. and Mrs. Hollis Lowrance and Mrs. Tammy Lee have returned home from Long Beach, California where they visited Mr. and Mrs. Larry Carter.

Mr. and Mrs. Cecil Bacon of Tulsa, Oklahoma visited Mrs. Dora Huddler, Mrs. Flossie Harper, and other relatives last weekend.

## Herpel news

**By Alice Condrey**  
Miss Stacey Nesbitt, who is attending college at Fayetteville, was home over the weekend and returned to college on Tuesday.

Mrs. Cynthia Ramer, Mr. Parm Ramer and Mr. Bill Turney had lunch with the Millard Condrey's on Friday.

Mrs. Yoland Tinkle of Mountain Home visited the Millard Condreys on Monday.

Mrs. Grace Nesbitt and Mrs. Condrey Nesbitt went to Little Rock on Wednesday.

Our deepest sympathy to the family of Mrs. Retha Burns and Ronnie Brightwell in the loss of their loved ones. Aunt Retha, as most of us in this community called her, was our telephone operator for many years and would call in to town for us while we had the old crank type telephones in this community until the year 1970.

Mr. Bill Wade made a business trip to Little Rock last week.

Happy birthday wishes to Yoland Tinkle of Mountain Home and Mrs. Thelma House of Oak Grove Lodge who are celebrating birthdays tomorrow the 10th and also to Bobby and Gary Condrey who are celebrating birthdays the

12th. Daniel Partee, son of Mrs. Ann Sticklen, celebrated his 12th birthday yesterday, the 8th, with birthday cake and ice cream. Helping him celebrate were: Mr. and Mrs. Clay Sticklen, Bobby, Tasha and Patrick, Mr. and Mrs. J.D. Trammell and Denny Engle.

Mrs. Allee Darwin is in Stone County Medical Center at this time.

## Timbo news

**By Lauretta Lord**  
Mack and Lois Farris spent Saturday night with his cousins, Robert and Pat Anderson, at Melrose. They all attended an auction at Floral.

I would like to extend my sympathy to Francis Gammill and Pat Balentine and families who have lost loved ones.

The friendship supper at Calvary Baptist Church was Wednesday night.

Rev. Thurlow and Maxine Lee of Oil Trough were visiting friends and relatives Thursday of this week.

Glad to report Lois Farris out again. She and Mack visited with the Lord's Thursday night for a while.

Becky Balentine who is attending college at Fayetteville visited her parents, Laverl and Irene Balentine, Sunday.

Mrs. Hazel Irving celebrated a birthday this week. We wish her many more happy birthdays.

### TWIN LAKES GUN SHOW

Sponsored by  
Twin Lakes Gun Club

**September 24 & 25**

9 a.m. to 5 p.m. both days  
**FREE ADMISSION**  
Tables \$25.00

For Table Reservations  
Call (501) 435-6759 after 6 p.m.  
Mountain Home, AR

**VILLAGE MALL**

We would like to express our sympathy to the family of Isaac Treat in the loss of their father.

I visited with Anna Vanderdick and others in the Compton's Oak Grove Lodge for a short time Thursday morning.

Mack and Lois Farris visited their Aunt Emille Farris in the hospital at Conway Wednesday. Mrs. Farris was there for a checkup.

Several of the senior citizens who rode the bus Saturday went to the doctor. They were: Mildred Shannon, Otis and Minnie Powell, Zorette Freeman and Unia Stewart. Most of them got a good report.

Jim Lord is in the process of building a nice large room onto his mobile home.

## PETE'S TIRE SHOP

Now open in Newnata  
New and used tires  
If you need tires, check our  
prices before buying

Newnata, Ark. Used 8.25-20 truck tires 746-4701

## Q. Why should you pay us to switch to us?

### Because you get all these extras for only \$49.95.

**Here's a Super Offer from Synergy Gas**

- first year's tank rental
- 50 gallons of propane
- tank setting and regular hook up
- on time, every time metered delivery
- free, no interest even payment plan
- 24-hour, 7-day emergency service
- gas appliance system check
- reliable, courteous and friendly service

Plus a \$25 gift certificate toward your next appliance purchase, if you act before September 30, 1988.

**SYNERGY GAS**

Main St. Mountain View  
269-3450

Dave Smith, M.C.; Golden Years, Bob Dawson, J.D. Fleming, Williams Family, Nelson Family, Mtn. Magic, Ray Ricketts, Georgia and Sheryl Irvine, Kenny Sims, Jessie Finch, Hubert Engle.

**Sunday, September 18:** Special Gospel Concert. Hank Blumenthal, M.C.; Nelson Family, Hank and Eulaine's Ozark Music, Kim Lowe and J.C. Bonds, The Gospel Messengers, Gospel Harvesters, Ray Ricketts.

**Monday, September 19:** Dave Campbell, M.C.; Gayland & Emagene & Company, Kathy Sutterfield, J.D. Fleming, Sasafraass, James Gambino, Ozark Express, Georgia & Sheryl Irvine, Judy Logan, Dar Stow, Bill Ford, Bud Malmstrom, Walter and Julia Case.

## Stone Ground Natural Foods

Need a quick, healthy breakfast for the kids?  
Come in and choose from several delicious products.

**Honey Frosted Corn Flakes**

**Fruit-E-O's**

**Oat Bran Flakes, regular or with almonds and dates**

**Roasted peanuts, with or without salt \$1.86/lb.**

**Oat bran fiber 180 tablets/\$10.56**

1/2 mile north of Jct. 5-9-14 269-8164  
Monday-Friday 10 a.m.-6 p.m. Saturday 10 a.m.-4 p.m.  
"We accept food stamps." P.O. Box 988 Mountain View

## RENTER'S INSURANCE

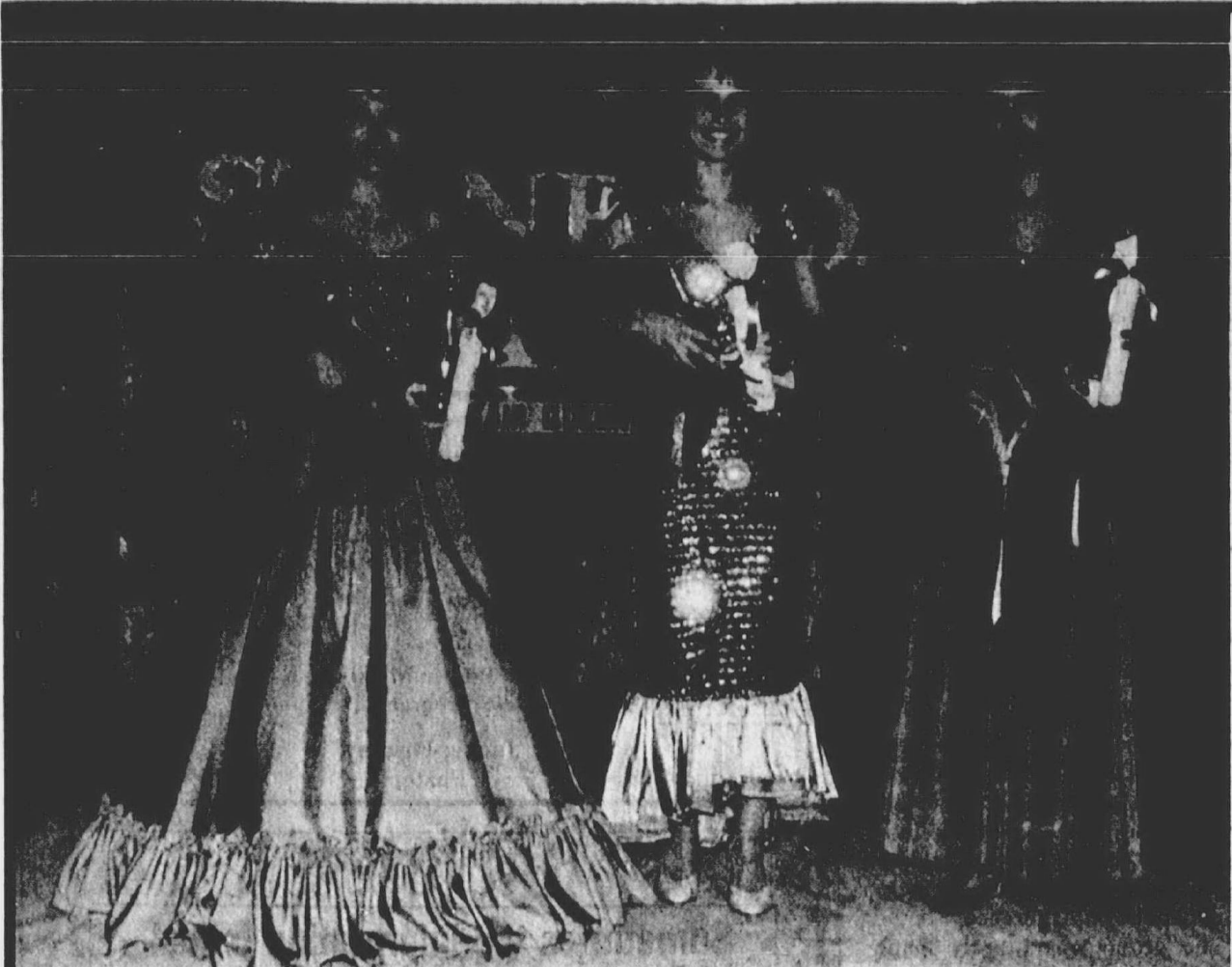
**For the things you own when you don't own the house**

Shelter's Renter's Insurance Policy lets you protect your personal property and your liability, even though you don't need all the coverages the homeowner needs.

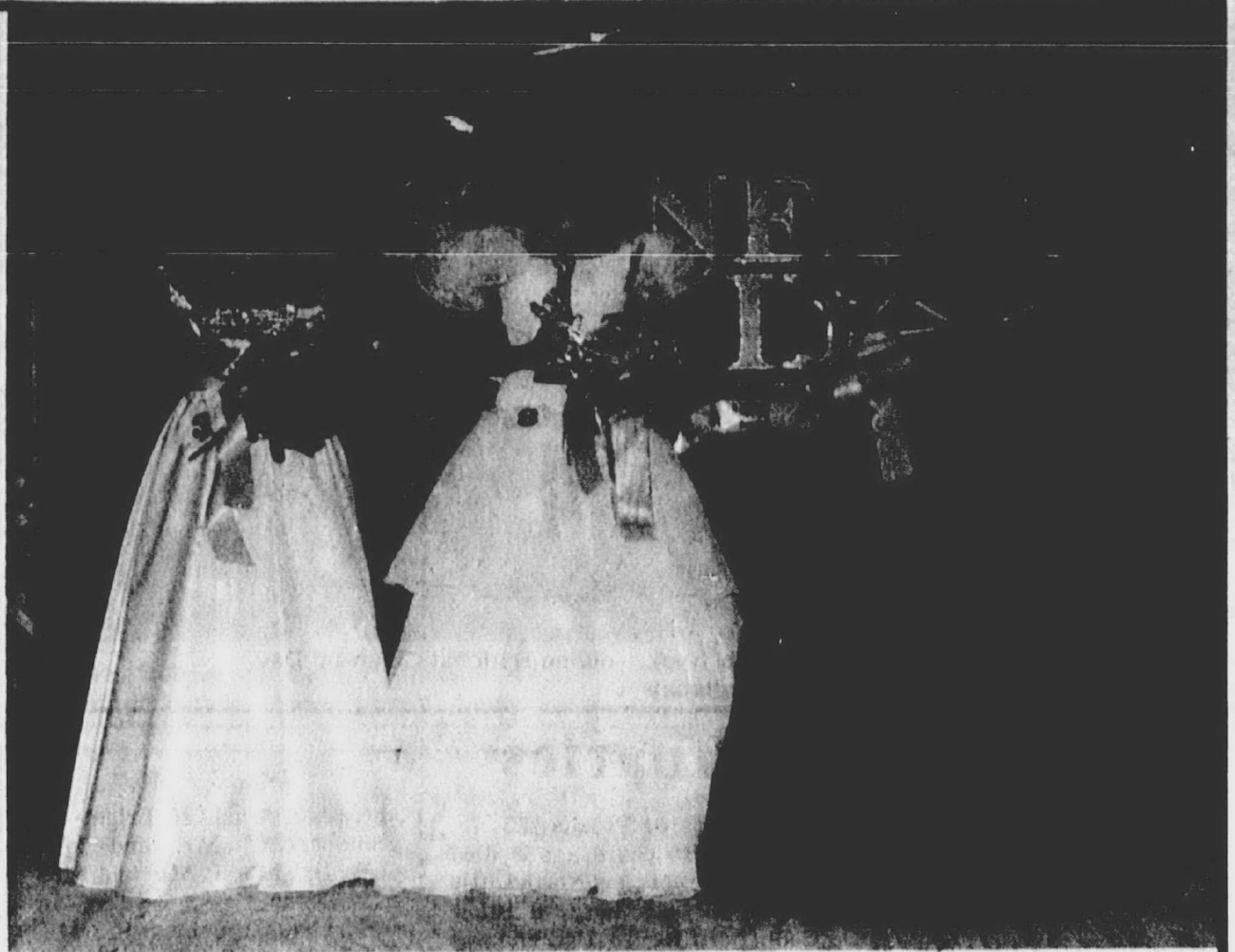
**Edwin Luther Agent**  
Main St.  
Mtn. View, Ark.  
269-3414

*Personal Service*  
AT SHELTER, Shelter Insurance Companies 88  
IT'S A MATTER OF PERSONAL PRIDE.

| Channel 6<br>Public Television                                                                                                                                                                                                                                                                                                                                                                                                                                                             | Channel 4<br>NBC                                                                                                                                                                                                                            | Channel 7<br>ABC                                                                                                                                                                                                                                                                                                                                                                                                      | Channel 11<br>CBS                                                                                                                                                                                                                                                                        |
|--------------------------------------------------------------------------------------------------------------------------------------------------------------------------------------------------------------------------------------------------------------------------------------------------------------------------------------------------------------------------------------------------------------------------------------------------------------------------------------------|---------------------------------------------------------------------------------------------------------------------------------------------------------------------------------------------------------------------------------------------|-----------------------------------------------------------------------------------------------------------------------------------------------------------------------------------------------------------------------------------------------------------------------------------------------------------------------------------------------------------------------------------------------------------------------|------------------------------------------------------------------------------------------------------------------------------------------------------------------------------------------------------------------------------------------------------------------------------------------|
| <b>Wednesday</b>                                                                                                                                                                                                                                                                                                                                                                                                                                                                           |                                                                                                                                                                                                                                             |                                                                                                                                                                                                                                                                                                                                                                                                                       |                                                                                                                                                                                                                                                                                          |
| 6:00-MacNeil/Lehrer Newshour<br>7:00-Moyers' The Secret Government<br>8:30-Andrew Lloyd Webber Story<br>10:00-Nightly Business Report<br>10:30-Bill Moyers' World of Ideas                                                                                                                                                                                                                                                                                                                 | 6:00-Eyewitness News<br>6:30-Win, Lose or Draw<br>7:00-Unsolved Mysteries<br>8:00-"Downpayment On Murder"<br>10:00-Eyewitness News<br>10:30-Tonight Show<br>11:30-David Letterman<br>12:30-Later with Bob Costas                            | 6:00-Channel 7 News<br>6:30-Wheel of Fortune<br>7:00-Growing Pains<br>7:30-Head of the Class<br>8:00-Someone You Know<br>9:00-China Beach<br>10:00-Channel 7 News<br>10:30-Entertainment Tonight<br>11:00-USA Today<br>11:30-ABC News Nightline<br>12:00-GunsMoke                                                                                                                                                     | 6:00-11 Action News<br>6:30-A Current Affair<br>7:00-Live! Dick Clark Presents<br>8:00-The Equalizer<br>9:00-Wiseguy<br>10:00-11 Action News<br>10:30-Cheers<br>11:00-"Tiger Joe"<br>1:00-Sally Jessy Raphael                                                                            |
| <b>Thursday</b>                                                                                                                                                                                                                                                                                                                                                                                                                                                                            |                                                                                                                                                                                                                                             |                                                                                                                                                                                                                                                                                                                                                                                                                       |                                                                                                                                                                                                                                                                                          |
| 6:00-MacNeil/Lehrer Newshour<br>7:00-The Soundies<br>8:00-Mystery!<br>9:00-The Africans<br>10:00-Nightly Business Report<br>10:30-Bill Moyers' World of Ideas                                                                                                                                                                                                                                                                                                                              | 6:00-Eyewitness News<br>6:30-Win, Lose or Draw<br>7:00-The Cosby Show<br>7:30-A Different World<br>8:00-1988 Summer Olympics Preview<br>10:00-Eyewitness News<br>10:30-Tonight Show<br>11:30-David Letterman<br>12:30-Later with Bob Costas | 6:00-Channel 7 News<br>6:30-Wheel of Fortune<br>7:00-Say No To Drugs<br>7:30-"The Spy Who Loved Me"<br>10:00-Channel 7 News<br>10:30-Entertainment Tonight<br>11:00-U.S.A. Today<br>11:30-ABC News Nightline<br>12:00-GunsMoke                                                                                                                                                                                        | 6:00-11 Action News<br>6:30-A Current Affair<br>7:00-48 Hours<br>8:00-"The Return of Sherlock Holmes"<br>10:00-11 Action News<br>10:30-Cheers<br>11:00-"The Formula" 1980<br>1:00-Sally Jessy Raphael                                                                                    |
| <b>Friday</b>                                                                                                                                                                                                                                                                                                                                                                                                                                                                              |                                                                                                                                                                                                                                             |                                                                                                                                                                                                                                                                                                                                                                                                                       |                                                                                                                                                                                                                                                                                          |
| 6:00-MacNeil/Lehrer Newshour<br>7:00-Washington Week in Review<br>7:30-Wall Street Week with Louis Rukeyser<br>8:00-Arkansas Week<br>9:00-We Shall Overcome<br>9:30-AETN Fall Preview<br>10:00-Nightly Business Report<br>10:30-Bill Moyers' World of Ideas                                                                                                                                                                                                                                | 6:00-Eyewitness News<br>6:30-Win, Lose or Draw<br>7:00-1988 Summer Olympics Opening Ceremonies<br>11:00-Eyewitness News<br>11:30-David Letterman<br>12:30-Friday Night Videos                                                               | 6:00-Channel 7 News<br>6:30-Wheel of Fortune<br>7:00-Perfect Strangers<br>7:30-Full House<br>8:00-Mr. Belvedere<br>8:30-Gotta Have It<br>9:00-20/20<br>10:00-Channel 7 News<br>10:30-Entertainment Tonight<br>11:00-U.S.A. Today<br>11:30-ABC News Nightline<br>12:00-Ebony/Jet Showcase                                                                                                                              | 6:00-11 Action News<br>6:30-A Current Affair<br>7:00-"Dee Wee's Big Adventure"<br>9:00-"Lily: Sold Out"<br>10:00-11 Action News<br>10:30-Cheers<br>11:00-"Blue Lightning"<br>1:00-Sally Jessy Raphael                                                                                    |
| <b>Saturday</b>                                                                                                                                                                                                                                                                                                                                                                                                                                                                            |                                                                                                                                                                                                                                             |                                                                                                                                                                                                                                                                                                                                                                                                                       |                                                                                                                                                                                                                                                                                          |
| 12:00-Rod & Reel III<br>12:30-Woodcarving with Rick Butz<br>1:00-Natural, Wild & Free<br>1:30-Living With Animals<br>2:00-Wild, Wild World of Animals<br>2:30-Science Journal<br>3:00-NOVA<br>4:00-Striped Bass: The Mysterious Disappearance<br>5:00-Country Music Legends<br>7:00-The Lawrence Welk Show<br>8:00-"A Connecticut Yankee in King Arthur's Court"<br>10:00-Dr. Who                                                                                                          | 12:00-Baseball<br>3:00-1988 Summer Olympics<br>6:00-Channel 4 News<br>6:30-1988 Summer Olympics (Live)<br>11:00-Eyewitness News<br>11:30-1988 Summer Olympics (Live)<br>1:30-Sign-Off                                                       | 12:00-"Branded"<br>12:30-This Week w/Oriskany<br>1:00-Blue Blocker Sunglasses<br>2:00-Wall St. Journal Report<br>2:30-Siskel & Ebert<br>3:00-"Three Coins in the Fountain"<br>5:00-Channel 7 News<br>5:30-ABC News<br>6:00-MacGyver<br>7:00-Growing Pains<br>7:30-Head of the Class<br>8:00-Who's the Boss?<br>8:30-Perfect Strangers<br>10:00-Channel 7 News<br>10:30-Entertainment This Week<br>11:30-GunsMoke      | 12:00-Eye on Arkansas<br>12:30-Wild Kingdom<br>1:00-Unannounced<br>1:30-Florida State @ Clemson<br>5:00-CBS Evening News<br>5:30-11 Action News<br>6:00-Star Trek<br>7:00-Gleanings: The Great One<br>8:00-West 57th<br>9:00-11 Action News<br>10:30-Hee Haw<br>11:30-"Underworld Story" |
| <b>Sunday</b>                                                                                                                                                                                                                                                                                                                                                                                                                                                                              |                                                                                                                                                                                                                                             |                                                                                                                                                                                                                                                                                                                                                                                                                       |                                                                                                                                                                                                                                                                                          |
| 12:00-American Interests<br>1:00-Arkansas Week<br>1:30-Firing Line<br>1:30-John McLaughlin's 1 On 1<br>2:00-McLaughlin Group<br>2:30-Modern Maturity IV<br>3:00-To The Manor Born<br>3:30-The Good Neighbors<br>4:00-The Frugal Gourmet IV<br>4:30-The Victory Garden<br>5:00-The Woodwright's Shop<br>5:30-This Old House<br>6:00-Wild Side<br>6:30-Arkansas Borne<br>7:00-Slippo & (ay)funkel<br>8:30-AETN Fall Preview<br>9:00-Masterpiece Theatre<br>10:00-Metropolitan Opera Presents | 12:00-Denver @ Kansas City<br>3:00-Olympics Coverage (taped)<br>6:00-Eyewitness News<br>6:30-Olympics Coverage (live)<br>11:00-Eyewitness News<br>11:30-Olympics Coverage (live)<br>1:30-Sign-Off                                           | 12:00-Business World<br>12:30-This Week w/Oriskany<br>1:00-Blue Blocker Sunglasses<br>2:00-Wall St. Journal Report<br>2:30-Siskel & Ebert<br>3:00-"Three Coins in the Fountain"<br>5:00-Channel 7 News<br>5:30-ABC News<br>6:00-MacGyver<br>7:00-Growing Pains<br>7:30-Head of the Class<br>8:00-Who's the Boss?<br>8:30-Perfect Strangers<br>10:00-Channel 7 News<br>10:30-Entertainment This Week<br>11:30-GunsMoke | 12:00-Philadelphia @ Washington & N.Y. Giants<br>@ Dallas<br>6:00-60 Minutes<br>7:30-Murder, She Wrote<br>8:00-"Rockabye"<br>10:00-11 Action News<br>10:30-Miss Arkansas USA Pageant                                                                                                     |
| <b>Monday</b>                                                                                                                                                                                                                                                                                                                                                                                                                                                                              |                                                                                                                                                                                                                                             |                                                                                                                                                                                                                                                                                                                                                                                                                       |                                                                                                                                                                                                                                                                                          |
| 6:00-MacNeil/Lehrer Newshour<br>7:00-The Infinite Voyage<br>8:00-McLaughlin Group<br>9:00-Louis Rukeyser's 1988 Election Guide<br>10:00-Nightly Business Report<br>10:30-Bill Moyers' World of Ideas<br>11:00-Learn to Read                                                                                                                                                                                                                                                                | 6:00-Eyewitness News<br>6:30-Olympics Coverage, live<br>11:00-Eyewitness News<br>11:30-Tonight Show<br>12:30-Later with Bob Costas                                                                                                          | 6:00-Channel 7 News<br>6:30-Wheel of Fortune<br>7:00-Indiana Jones vs Cleveland<br>10:00-Channel 7 News<br>10:30-Entertainment Tonight<br>11:00-USA Today<br>11:30-ABC News Nightline<br>12:00-GunsMoke                                                                                                                                                                                                               | 6:00-11 Action News<br>6:30-A Current Affair<br>7:00-Bugs Bunny<br>7:30-"White Nights"<br>10:00-11 Action News<br>10:30-Cheers<br>11:00-CBS Late Night<br>1:30-Sally Jessy Raphael                                                                                                       |
| <b>Tuesday</b>                                                                                                                                                                                                                                                                                                                                                                                                                                                                             |                                                                                                                                                                                                                                             |                                                                                                                                                                                                                                                                                                                                                                                                                       |                                                                                                                                                                                                                                                                                          |
| 6:00-MacNeil/Lehrer Newshour<br>7:00-NOVA<br>8:00-Beyond 1986: A Delicate Balance<br>9:00-Glacial Ryans<br>10:00-Nightly Business Report<br>10:30-Bill Moyers' World of Ideas<br>11:00-G.E.D. on TV                                                                                                                                                                                                                                                                                        | 6:00-Eyewitness News<br>6:30-Olympics Coverage, live<br>11:00-Eyewitness News<br>11:30-Tonight Show<br>12:30-Later with Bob Costas                                                                                                          | 6:00-Channel 7 News<br>6:30-Wheel of Fortune<br>7:00-Growing Pains<br>7:30-Head of the Class<br>8:30-"Man With the Red Shoe"<br>10:00-Channel 7 News<br>10:30-Entertainment Tonight<br>11:00-USA Today<br>11:30-ABC News Nightline                                                                                                                                                                                    | 6:00-11 Action News<br>6:30-A Current Affair<br>7:00-Bugs Bunny<br>7:30-"White Nights"<br>10:00-11 Action News<br>10:30-Cheers<br>11:00-CBS Late Night<br>1:30-Sally Jessy Raphael                                                                                                       |



Carla Gjestvang, center, was crowned 1988 Stone County Fair Queen. Lorle Trammell, left, was first runner-up and April Thatcher was second runner-up.



April Jessen, center, was the winner of the Junior Miss Stone County Fair Queen. Marletta McClung, left, was first runner-up and Natalie Altman was second runner-up.



Young Miss Stone County Fair Queen for 1988 is Kimberly Wilson, center. Jennifer Green, left, was first runner-up and Bobbie Lea Fletcher was second runner-up.



Chasity Nicole Vallery, center, was the winner of the Little Miss Petite Pageant. First runner-up was Ellsa Cartwright, left, and second runner-up was Mandy McClung.



Prize Baby Boy for 1988 is Jonathan Aaron Kelth Masters, left. Kaji Ross Nichiuchi, center, was first runner-up and Zane Johnson was second runner-up.



Winner of the Prize Baby Girl Contest was Tolle Michelle Hipp, center, and second runner-up was Kay Lancaster, right. First runner-up was Abby Cassie Jo Vannater.



Little Mr. Stone County Fair is Justin Sutton. First runner-up was Deric Sutton, right, and second runner-up was Trent Martin.



Little Miss Stone County Fair is Sarah Elizabeth Stevens, left. First runner-up was Tamara Hipp, right, and second runner-up was Katie Ferren.

## Fair

Continued from Page 1

The following are Best of Show winners in the Home Economics divisions:

Junior - Eugenie Bisulco, art; Adrian Lovenstein, clothing; Alissa Kay Harris, flower show; Brian Fortich, food preparation; Amy Smith, food preservation; Andrea Dodson, handicraft; Sara Purdom, needlecraft; Susan Green, photography; Renee George, quilts and afghans.

Senior - Guy Harris, art; Dory Crookshank, clothing; Irene Gler, flower show; Minnie Swafford, food preparation; Irene Gler, food preservation; Bob Momich, handicraft; Rowena Dean, needlecraft; Garry Hopper, photography; Myrtle Norricks, quilts and afghans.

Wilton Awards were won by Audrey Gilliam and Karen Morgan.

The following received Ball Corporation Awards:

Junior - Miranda Gillihan, in both fruits and vegetables.

Senior - Fruits: Karen Morgan and Arlene Ballinger. Vegetables: Arlene Ballinger and Mrs. Eppes Mabry. Pickles and Relishes: Sherrie Wall and Jean Rock. Jams and Jellies: Mary L. Wilson and Minnie Swafford.

Mountain View FFA received the first place award for junior educational booths, followed by Tri-County FFA and the 4-H Beef Tracks Project Group.

Adult division winner was Luber/Signal Hill EHC, followed by Mountain View EHC and Farm Bureau Women's Committee.

The Best of Show award in the poultry division went to an entry by Fred Cary, Herbert Drouins won in rabbits and David Long was the senior winner in crops with a quart of honey. Eugenie Bisulco was the junior winner with tomatoes.

The following is a list of winners in the livestock show:

Junior sheep division: champion ewe, Eric Miller; reserve champion ewe, Eldon Miller; champion ram, Eldon Miller.

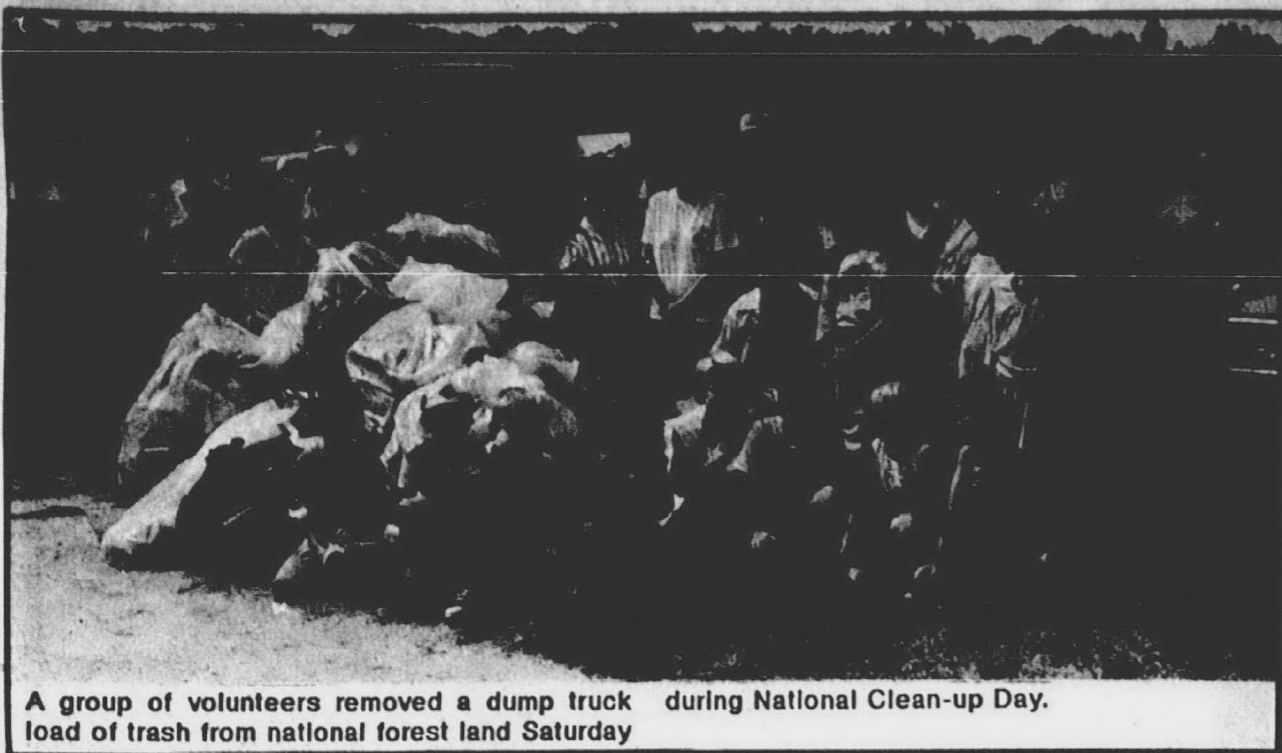
Junior goats division: champion Nubian, Stephanie Bisulco; reserve champion Nubian, Stephanie Bisulco; champion kid goat, Eddie Vallery; reserve champion kid, Chasity Vallery; champion Lamocha, Gabrielle Vallery.

Senior goat: champion Nubian, Thomas Bisulco.

Junior beef division: Kevin Stair showed the champion Angus female, reserve champion Angus female, champion Angus bull and reserve champion Angus bull. Heather Eno showed the champion Hereford bull.

Open division: champion Santa Gertrudis female, Van Rosa; reserve champion Santa Gertrudis female, Van Rosa; champion Shorthorn female, Howard Cavender; reserve champion Shorthorn female, Howard Cavender; champion Polled Hereford female, Gill Brothers Farm; reserve champion Polled Hereford female, Gill Brothers Farm; champion Charolais female, W.A. Compton; reserve champion Charolais female, W.A. Compton; champion Charolais bull, W.A. Compton.

Junior Showmanship awards went to Kevin Stair and Stephanie Bisulco.



A group of volunteers removed a dump truck load of trash from national forest land Saturday

### Local group participates in Clean-up Day

Thanks to the help of 33 energetic volunteers, a dump truck load of trash was removed from National Forest land last Saturday.

This year the clean-up focused on the Hayden Bend Pond and the nearby Boswell Shoals White River access. This area includes a beautiful five-acre pond that is stocked with both catfish and bass, surrounded by pastures and woods. The river access had several well-used camping spots where trash had been carelessly left.

"It was a great group of folks," reported District Ranger Richard Mills who helped shovel trash piles into bags for removal. "Since the Forest Service has been short-handed due to budget reductions, this kind of help really makes a difference."

The group was largely made up of Mountain View area cub scouts and entire families.

"We rally had a good time," said Donna Salsbury of Mountain View. "It made us feel good that we were leaving the area alot prettier."

"It's nicer for fishing, too," chimed in her ten-year-old son, Doug. (The Salsbury's returned to Hayden Bend Pond the day after the clean up and Doug caught a 13-inch, two pound bass!)

All volunteers were treated to soft drinks and snacks provided by Coca-Cola Bottling Company and Frito-Lay. H&R Block donated cups. Everyone who participated received a certificate of appreciation from Ranger Mills and a coupon for a free cave tour through Blanchard Springs Caverns, as well as Woody Owl packets.

This effort was part of a National Clean-Up Day that is held the first Saturday after Labor Day every year. Clean-Up Day was established to beautify federal lands where a thoughtless minority left their trash behind.

**Church of Christ**  
Mountain View, Arkansas  
WELCOMES YOU  
Church: 269-3702

Services:  
Sunday Bible Study 9:45 a.m.  
Sunday Worship 10:45 a.m. & 6 p.m.  
Wednesday Bible Study 7:00 p.m.  
Radio lesson Sunday 8:30 a.m. on KWOZ FM

Frank B. Curtis Minister  
Brad Moore Youth Minister

**First Baptist Church**  
Next to the water tower, one block NW of Courthouse

Early Worship Service 8:45 a.m.  
Sunday School 9:45 a.m.  
Morning Service 11:00 a.m.  
Church Training 6:00 p.m.  
Evening Worship 7:00 p.m.  
Wednesday Prayer Meeting 7:00 p.m.  
KWOZ Radio Program live Sunday 11:15 a.m.

Jackie Fendley, Pastor  
Church Office 269-3409 Parsonage 269-4162

### Obituaries

#### Isaac Aushon Treat

Isaac Aushon Treat, departed this life Saturday, September 3, 1988, at the Stone County Medical Center at the age of 88 years, nine months, and 18 days.

The son of John S. Treat and Josephine Huffines Treat, he was born November 15, 1899 at Big Flat. He was a life long resident of Searcy and Stone Counties. He was a retired cattle farmer and a member of the Big Flat Church of Christ. He was married to Vernie Lee on March 2, 1919. Into this union were born six children; four sons and two daughters.

He was preceded in death by his wife, Vernie Treat, one son, Edward Treat; his parents, John and Josephine Treat; eight brothers, four sisters, two stepbrothers and two grandchildren.

He is survived by three sons, John Afton Treat of Batesville, Ralph A. Treat of Fayetteville and Clifford M. Treat of Collierville, Tennessee; two daughters, Mrs. Veneda Treat Long of Mountain View and Mrs. Geneva Reno of Pittsburg, Kansas; one sister, Myrtle Rose of Eufala, Oklahoma; two uncles, 22 grandchildren; 27 great grandchildren; one great great grandson and a host of other relatives and friends.

Funeral services were 2 p.m. Tuesday, September 6, 1988 at Big Flat Church of Christ with Bro. Hayden Mahan officiating. Burial was in Alco Cemetery by North Arkansas Funeral Home.

Pallbearers were Billy Don Long, Stanley Joe Long, Ronnie Treat, Tony Treat, Wyatt Treat, and Claude Reno. Honorary pallbearers were Jimmy D. Treat, Michael Treat, Randy Treat, Mark Treat and Ricky Reno.

#### Clarice Viola Kelly Chitwood

Clarice Viola Kelley Chitwood, age 78, of St. James died September 2, 1988 in Little Rock. She was born at St. James October 7, 1909. Clarice was a fabric weaver at the Ozark Folk Center, a member of the Arkansas Craft Guild and American Indian Center of Arkansas, and owner and operator of a grocery store at St. James for 30 years.

Her parents, J.R. and Dora Kelly; a brother, Ullis Kelley, preceded her in death.

Survivors are her husband, Mac Chitwood; two sons, Paul Chitwood of Austin and Donald Chitwood of St. James; six grandchildren and three great grandchildren.

Funeral service was 1 p.m. Monday, September 5, at St. James Methodist Church with Rev. Roger Beal officiating. Burial was in St. James Cemetery by Crouch Funeral Home.

Pallbearers were Jim Crowell, Billy Ford, Sam Younger, Von Younger, Ernie Teague and Herman Chitwood.

#### Earl Joe Prichard

Earl Joe Prichard, age 55, died September 8, 1988 in North Little Rock. He was born in Stone County October 13, 1932 and was a retired janitor and a veteran of Korea.

His parents, William and Sadie Hughes Prichard and a sister, Bobie Morgan, preceded him in death.

Survivors are three sons, Jimmy, Billy and Rick Prichard, all of Mountain View; a daughter, Linda Clark of Mountain View; three sisters, Myrl Allcorn and Drewie Allcorn, both of Mountain View, Elsie Tuttle of Eudora, Kansas; five grandchildren.

Funeral service was 10 a.m. Saturday, September 10, at Crouch Chapel with Rev. Jim Harrell officiating. Burial was in Flatwoods Cemetery.

Pallbearers were Lonnie Richardson, Darrell Richardson, Junior Kendrick, Lester Gill, George Shepherd and Grady Noricks.

#### Retha Cross Burns and Ronald Dale Brightwell

Retha Cross Burns, age 93, died September 7, 1988, in Compton's Oak Grove Lodge. She was born October 14, 1894 at Hercul. She was a homemaker and a member of Mount Joy Baptist Church.

Her husband, Tom Burns, and three grandchildren, Ronald Brightwell, Debbie Morgan and Bobby Balentine, preceded her in death.

Survivors are two daughters, Frances Brightwell Gammill of Timbo, Pat Balentine of Fifty Six; one brother, Walter Cross of Camden; one sister, Mildred Stubbs of Mountain View; four grandchildren, Kim Burns, Cindy Branscum, Denise Storey and Dayna Trammell; eight great grandchildren.

Ronald Dale Brightwell, born at Batesville June 6, 1951, died September 6, 1988 in Batesville at age 37. Ronald was a timber worker.

He was preceded in death by

his father, Arnold H. Brightwell; grandparents, Mr. and Mrs. O.R. Brightwell, Mr. and Mrs. A.T. Burns.

Survivors are his wife, Malinda Altman Brightwell; a son, Joshua Brightwell, of the home; two daughters, Misty and Brandy Brightwell, both of Clinton; mother and step-father, Frances and L.C. Gammill of Timbo; two sisters, Denise Storey and Dayna Trammell, both of Mountain View.

Double funeral service was 2 p.m. Thursday, September 8, at Flatwoods Baptist Church with Rev. Loyd Nesbitt and Rev. Luther Branscum officiating. Burial in Flatwoods Cemetery by Crouch Funeral Home.

Pallbearers for Mrs. Burns were Mac Stubbs, Darius Stubbs, Bill Cross, William Wade, Alvin McCarn and Don Crispell. Honorary pallbearers were Dr. H.U. Monroe, Dr. Terry Sutterfield, L.C. Gammill, R.L. Balentine and Eddie Morgan.

Pallbearers for Ronald were Barry Storey, Shelby Canard, Tim Storey, Jackie Trammell, Johnny Brightwell and Rodger Stone. Honorary pallbearers were Dr. Carl T. Beck, Dr. Howard Monroe, Dr. Terry Sutterfield, L.C. Gammill, A.D. Brightwell, Obie Clark, Eddie Morgan, L.C. Green and Blake Beckham.

**North Arkansas Funeral Home**  
HWY. 66 WEST  
MOUNTAIN VIEW, AR 72560  
Complete Funeral Services  
269-3462  
INSURANCE MONUMENTS

Flowers for all occasions  
"Say it with flowers"  
Mtn. View Flower & Gifts  
Business 269-3864  
After Hours 585-2536

Subscribe to the Stone County Leader 269-3841

**BECK CLINIC, P.A.**  
Prepare for flu season, it's just around the corner.  
New 1988 Influenza Vaccine is now available at Beck Clinic, P.A.  
No appointment necessary.  
Carl T. Beck, M.D., A.A.F.P.  
269-3834 - Mtn. View, AR 72560

**Brown's Chiropractic Clinic**  
will be closed  
Thursday, September 15 through  
Sunday, September 18.  
Regular office hours will resume on Monday, September 19.  
Dr. Brown will be attending continuing education classes.

Sometimes the information is just as important as the medicine. Use them both.

Does your pharmacist take time to explain your medicine and give you patient counselling computerized printouts? We do at...

**WOODS PHARMACY**  
DANA L. WOODS, P.D.  
ON THE SQUARE MTN. VIEW, AR  
PHONE 269-3253  
Monday - Friday, 8 to 6 Saturday - 9 to 5

**HearthStone Bakery and Stone County celebrate Breadfest '88**

We're famous for fabulous breads - all handmade here in the heart of Mountain View.

Enjoy the benefits of bread baked fresh and preservative-free. (And our breads are made with pure vegetable shortening or oil.)

**This week - Buy three loaves, get one FREE\* We'll donate a fourth loaf to our local food bank for each sale.**

\*(Of equal or lesser value. Quantities of specific varieties may be limited.)

**HearthStone Bakery**  
In the Commercial Hotel on the Square  
269-3297

**End of Summer SPECIAL**  
8 Piece Chicken Special \$9.99

8 pieces, large slaw, potatoes, gravy, 4 biscuits

Refill 25¢ any size!

**Kentucky Fried Chicken.**  
Jct. 5-9-14 Mtn. View 269-3900

**USED CAR Specials**

|                                                                         |                                                                                                      |
|-------------------------------------------------------------------------|------------------------------------------------------------------------------------------------------|
| 1984 Oldsmobile Delta '88<br>4 door, one owner, 42,000 miles<br>\$7,495 | 1986 Chevy Celebrity Wagon<br>\$6,995                                                                |
| 1986 Dodge 600<br>4 door, extra clean<br>\$7,995                        | 1987 Dodge D-100<br>short wheel base, 6 cylinder, standard transmission, air, 1,300 miles<br>\$8,995 |

**Altman Motor Company**  
Hwys. 5-9 N. 269-3861

## Capitol Report

Continued from Page 2

ciency to county assessors now burdened with those annual assessment lines, should make up most of the difference.

"What if the change results in new taxes for me?" It will be harder, not easier, to raise the tax that most affects average wage-earners.

I'd like to receive your comments and inquiries about this article. Write Lt. Governor Winston Bryant, 270 State Capitol, Little Rock, Arkansas 72201. Our phone number is (501) 682-2144.

7:30 p.m. Polling locations are as follows:

Rural Special: Rural Special campus, Old Main building.

Mountain View: Arkansas Power and Light building; Pleasant Grove fire station.

Timbo: Timbo campus, agri building; Big Springs Church; Ona Church; Flag community building. The ballot at Timbo will include a question on a nine mill property tax increase.

Tri-County: Fifty Six DAV building; Optimist Church of God of Prophecy; Big Flat City Hall; Table Rock Community Building.

Absentee voters should submit a signed application to the Stone County Clerk and must vote there by the close of business Monday. Those representing disabled voters may turn in ballots by 1:30 p.m. Tuesday.

## Melrose VFD to sponsor turkey shoot

The Melrose Volunteer Fire Department is having a turkey shoot this Saturday at the fire station beginning at 3 p.m.

There will be four events: .22 open sight, .22 scope sight, shotgun and muzzleloader.

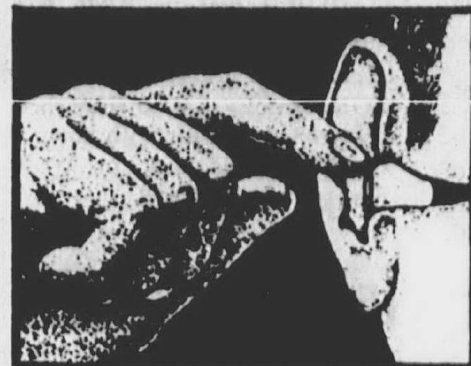
Shells will be furnished for all events except muzzleloader.

Entry fee is \$2.50 per event or \$10 for all four events. Certificates or checks for \$15 will be presented to the four winners.

Grilled hamburgers will be served.

## FREE HEARING TEST

This Beltone coupon good for One Free Electronic Hearing Test.



NADC Stone County Senior Center  
Mtn. View, AR  
Tuesday, September 20, 1988  
9 a.m.-12 noon

**Beltone®**

Better Hearing Through Professional Care

**Beltone Hearing Aid Service**  
318 West Walnut  
Springfield, MO 65806  
(417) 866-0551  
Licensed Hearing Aid Provider

## School board

Continued from Page 1

are met, because this must be done to keep our school. I will work to get the best qualified teachers. I will work to make sure Rural Special School has a future for our children.

"I hope the people of the Rural Special School District will give me a chance to be their voice on the school board."

Harry Sebert has served on the board for about six years, five of which he has been president.

He is a self-employed truck driver and his wife, Jody, works at the school as a bookkeeper. They have four children; Vernon, 26, Monty, 25, Teresa, 23, and Deanna, 21.

Sebert said serving on the board has been rewarding in that he can see the results of what the board has worked to achieve, which includes upgrading the school to meet the state standards and working out other problems that come along.

He said his primary goal is to help make Rural Special a better place to receive a quality education.

All polls throughout the county will open at 8 a.m. and close at

## Searcy County Livestock Auction

Hwy. 65 N. Marshall, AR

Sale each Monday, open at 6:00

Sale Begins at 1:00

Phone 448-3880 or 447-2441  
Office Home

Jack Simpkins - Owner/manager

We provide trucks to move cattle to sale. 447-2441

## Congratulations!

Stone County Fair Winners

## SFA Autumn Values

### CATTLE CORRAL PANEL

52" x 16"  
Model 14-5216114  
SALE PRICE \$1295



### STUDDED TEE POSTS w/CLIPS

Model 14-61330 - 6'  
14-651330 - 6 1/2'



Special Price

### 12-VOLT LIGHT TRUCK & VAN BATTERY

Your Choice

SALE PRICE \$4995 each

Model 17-524LTV  
17-524LTV  
17-574LTV



## LACKEY'S USED TRUCK

### BUYS OF THE WEEK

1987 Isuzu 1/2 ton metallic finish, economical 4 cyl. engine, standard shift, all taxes paid. Why buy new? Only \$5,995

1988 Dodge D50 1/2 ton, good color, one owner, 5 speed trans., 4 cyl. engine, AM/FM cassette, 12 month or 12,000 mile warranty included, at \$4,995

1988 Nissan King Cab air, AM/FM stereo, 5 speed trans., excellent tires, rally wheels & chrome trim rings, all taxes paid. Reduced to only \$6,995

1982 Chevy Luv Diesel LWB, 1/2 ton, gets up to 40 mpg, 5 speed trans., 4 cyl. engine, top of the line cab, good tires, deluxe wheel trim. Drive it. You'll buy it at only \$3,495

*The Heartbeat*  
OF AMERICA TODAY'S CHEVROLET  
**Lackey Motor Co.**

"On the Square" Mountain View, AR 269-3211  
Open all day Saturday for your shopping convenience.

Rugged carbon steel construction

### HI TEST LOG CHAIN

Hi-test carbon steel log chain w/grab hook at each end. 3/8" x 20'

Model 11-142486558



SALE PRICE \$19.95

### ALUMINUM ROOF COATING

5 gallons

Model 11-7083415

SALE PRICE \$1795



### A.T.V. TIRES

3-ply, belted fabric construction. Special built-in rim guard protects wheel rims.

Model 16-53-7-070 22x11-8 Trail Pro ..... \$40.45  
16-53-7-080 25x12-9 Turf Buster ..... \$52.45  
16-53-1-073 22x11-8 Stryker ..... \$44.45  
16-53-1-075 25x12-9 Stryker ..... \$56.45  
16-53-7-101 20x7-8 Amerthon ..... \$24.95

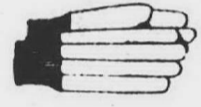


### BROWN JERSEY GLOVES

Brown cotton jersey knit wrist, 8 oz.

Model 11-508

SALE PRICE 79¢



### FLEECE CHORE GLOVES

Golden brown fleece cut bonded to rayon

12 1/2 GAUGE FENCE (DOMESTIC)



Model 14-9396125 - 939-6-12 1/2 ga. .... \$64.95  
14-10476125 - 1045-6-12 1/2 ga. .... \$73.95

### GOLD BAND BAR & CHAIN LUBRICANT

1 gallon  
Model 11-1990

SALE PRICE \$2.19



## North Arkansas Farm Supply

Store 269-3356 of Mtn. View Station 269- 8185

# LEADER CLASSIFIEDS

Where Stone County buyers and sellers get together!

Just Dial 269-3841 To Place Your Ad!

Subscribe to the Leader  
Just Dial 269-3841

## FREE WANT ADS

To all Leader subscribers!

CLASSIFIED

\*RATES\*

20 words or less \$3.00  
15¢ per word for words in excess of 20.  
50¢ billing charge (No billing charge if you pay before publication of your ad).

—DEADLINE—  
NOON MONDAY

For Wednesday Publication

To place your ad

Just Dial

-269-3841-

### Services

VIOLIN LESSONS: Ages 4 through adult. For information call 269-2251.

21-4tc

I WILL do your ironing at reasonable rates. Call 746-4671.

23-2tf

DO YOU KNOW a family member or friend who cannot read? We can help! Stone County Literacy Council, 269-3630 or 269-8851.

34-1tf

### Services

PROFESSIONAL Poodle trimming with TLC. Call 269-3135.

23-2tf

TV, VCR & APPLIANCE REPAIRS: On all makes and models. All work guaranteed. We also sell new G.E. televisions, VCR's, and appliances. Servicing Batesville area in sales & service since 1922. Heasley's Inc. 170 N. Central. 793-3921 or 793-3591.

44-1tf

### Vehicles

1972 Van, \$600. 1972 pickup, \$500. 297-8864 or 297-4201.

24-4tf

FOR SALE: 1956 Chevy two door sedan. Two tone blue, 283 standard three speed. Nice inside and out. 652-3522.

24-2tf

1978 CUTLASS Cruiser Station Wagon, excellent condition. \$2,500. Can be seen at McClung Ford.

24-1tc

CLEAN 1982 Ford LTD, 4 door, overdrive, PS/PB, air, AM/FM radio, good condition. Call 585-2581.

24-1tp

1977 CHEVY Suburban: V-8, automatic, air, PS, cruise, trailer hitch included. 7,000 miles on new motor, good condition. \$2,400. 269-3832 days. 269-2297 nights.

24-2tf

FOR SALE: 1971 VW Bug, \$600. 1935 Amati Violin, excellent condition, \$500. Call Bob Atchison. 269-3335. 269-4554.

24-2tf

### Vehicles

NEW 1987 Isuzu, diesel, LWB trucks. Air, power steering, five speed, white. Used 3 wheelers and 4 wheelers. 501-572-1393 or 501-295-4208.

23-4tp

SELL or Trade: 1970 Ford 24' van. Seven new tires, new engine, very good condition. Will trade for tractor or ? 757-2500.

23-2tf

1979 3/4 ton Chevrolet diesel: New tires, automatic transmission. Good condition. \$1,250. Call 269-8131.

23-4tf

BUY GOVERNMENT Seized and Surplus Vehicles from \$100. Fords, Chevys, Corvettes, etc., in your area. For info call (602) 842-1051 ext. 3761.

23-4tp

FOR SALE: 1975 Firebird, blue, some body and interior work needed, engine good. \$1,300. 269-8482.

23-2tf

### Help Wanted

UNIQUE Opportunity: Do you like to hunt, fish, as well as find it easy to talk to people? An exciting opportunity to join a dynamic alternative company which markets products to sportsmen now exists. Must have reliable transportation and be able to travel. Earn a year's income in three months. Call Karen at 591-6208.

24-1tc

### Help Wanted

JOB Opportunity: In need of several individuals to show fabulous line of merchandise from "House of Lloyd"! No investment. Call/write Karen Watts, P.O. Box 38 CPO, Zion, AR 72556. 368-4858.

24-1tp

CRYMES HOME Health, Mtn. View, Arkansas. RN wanted part time or full time. Apply in person or for more information call 269-4316.

## Licensed Nurses

Looking for a rewarding job caring for our elderly citizens? Full and part time LPN positions and part time RN position now available at Compton's Oak Grove Lodge Nursing Home. P.O. Box 930, Mountain View, AR 72560 269-3886.

SUBSCRIBE NOW  
STONE COUNTY LEADER  
269-3841

Merchandise

18 cubic ft. Sears Coldspot refrigerator: avocado, ice maker, \$150; 21" Snapper lawn mower, \$50; 5 hp rear tine tiller, 5 speed, \$250; 6 1/2 ft. wide 16 ft. long tandem trailer, \$575. 269-2256. 24-2tf

CHROME louvered headache rack: Like new, for pickup, \$100. 269-3832 day. 269-2297 night. 24-2tf

COLEMAN Camping Stove, \$20; wood louver door, \$25; children's curtains & matching bedspreads, \$15; pottery, \$5. 269-4531. 24-1tf

FREEZER, hide-a-bed, GE electric stove, chests of drawers, 10 drawer dresser, large cooler, camp stove. 269-4537. 24-2tf

15 ft. pleasure boat, 35 hp. Mercury motor and trailer for sale. \$500. 757-2537. 24-2tf

58.25 x 20 truck tires, \$75. Call 269-8218 at night. 24-2tf

NEW quilts, machine quilted, \$50 each. 269-8427. Also new quilt tops. 269-8641. 24-2tf

QUILT tops: \$15 and up. Different patterns. 269-3495. 24-2tf

FOR SALE: 22 cubic foot Sears chest freezer, \$100. 269-8482. 23-2tf

FOR SALE: Long pageant dress, size 3, lilac, excellent condition, \$50. 269-8482. 23-2tf

UPRIGHT PIANO in good condition. Exterior refinished. \$275. 447-2501. 23-3tf

USED window screens, 23, aluminum frames, 35" x 41 3/4". Good condition. Make offer. 757-2719. Monday - Friday, 8-4. 24-1tf

BOAT motor for sale: 3 horsepower, air cooled, with 6 gallon metal gas can, \$100. 269-3390 after 5. 23-2tf

FOR SALE or trade Martin Sigma guitar. Includes hard case, picks, extra set of strings, new, \$600. Cash or equivalent. 269-3135. 23-2tf

SELL or Trade: Winchester 308 model 70 with 8 power Swift Scope, ammo, case, never used, \$600 value. Need cutting and welding outfit. 757-2500. 23-2tf

FOR SALE: 130 cement blocks, 8", 50 cents each; 100 feet rabbit cage wire (new) 14 gauge, 1 roll 1x2x18 inches high, \$20; 1 roll 1x2x24 inches high, \$22; 1 Sears electric bass guitar and amp, \$100; 1 Fender electric bass guitar and amp, \$200; 1 Lafayette Telsat 925 CB base station, \$100. Call 269-8521 or 269-3418. 22-4tf

1965 AVION 24' single axle travel trailer, rear bath, twin beds, A/C, self-contained, excellent condition, ready to go. \$3,750. 591-6617. 21-4tf

SUBSCRIBE NOW STONE COUNTY LEADER 269-3841

For Rent

Merchandise

1977 BASS BOAT, Cajun, fully loaded, 18 ft., 175 hp Mercury motor, custom made cover. \$6,800. OBO. 757-2741 or 757-2582. 22-1tf

COMPLETE Encyclopedia Britannica set, \$250. Annuals of America (20 volume set), \$50; 78 rpm records; LP records and albums. 269-4537. 21-4tf

TWIN BED, metal cabinets, metal wardrobe, dinette set, adult bicycles, book shelves and stereo system. Priced right. 269-4537. 22-4tf

FOR SALE: Mobile home doors, windows & service. Mountain View Glass. 269-3298. 21-4tf

Wanted

WE THANK you for the newspapers, and yes, we still need them. We now have a second drop-off point that may be more convenient for some, the new pottery shop across the street from the post office. Thanks again, Stone County Ironworks. 49-1tf

NOW BUYING pine posts. Paying \$50 per cord. Call SENTINEL INDUSTRIES, INC. 362-8201 for information. 39-1tf

WANTED: Hardwood logs and timber. Any species. We pay for good size and quality. Call Curtner Lumber Co., Newport. 523-6701 collect. 26-1tf

Beginning September 1, buying ginseng everyday, Margie Earles, Hwy. 66 West, 269-8095. KJ Schofield buying ginseng every Friday, 4:00-5:00, Moody's Grocery. 23-4tf

For Rent

BUILDING for rent: Downtown, central heat & air, newly renovated. Call 269-8091. 24-2tf

FOR RENT: Two bedroom home, corner of Washington & Vine. \$120 per month. 269-3521. 24-1tf

FOR RENT: Neat two bedroom mobile home, partially furnished, adults only. \$150 per month plus deposit. Silver Creek Land Co., 269-4397. 24-1tf

FOR RENT: Three bedroom house in city limits. Adults only. 269-3513. 24-2tc

FOR RENT: House. Corner of Washington and Union. Suitable for working couple or elderly. Nopets. No Children. References required. Apply next door. Call 269-3521. 24-2tf

THREE bedroom house for rent. 269-8912. 24-2tc

PROFESSIONAL office space for rent: 1,600 square feet. Located in Kahoka Building. Available September 1. Contact Buddy Bolin at 269-3808 days. 23-1tf

FOR RENT: Mobile homes and housing for rent. 269-3298 or 269-8619. 15-1tf

FOR RENT: The Monroe Professional Building has office space for lease starting at \$75. Utilities, kitchen, reception room included. Call Joe Cwik 269-8035. 10-1tf

Mobile Homes

WANT to buy used mobile home (10' wide) or Park model. Low monthly payments. Call 904-542-7430. Ask for Vic. 23-2tc

FOR SALE: 14 x 70, three bedroom, two bath with covered top, porch and deck, on White River. Day 269-3845. 13-1tf

Personal

Pregnant, worried. We'll help. Alpha Problem Pregnancy Center 181 Broad St., Batesville, AR (Cooper Mini-Mall) Free pregnancy testing, confidential 888-1008

Real Estate

THREE Bedroom, two bath house for sale by owner: Well and city water, two acres, fenced. Blue Mountain Road, Timbo. 297-8864 or 297-8085. 24-4tf

HOUSE for sale in Mountain View. Five rooms, 1 1/2 bath, part-siding/rest rock, closed-in garage, large garden and extra lot. Call 652-3522. 24-3tf

FOR SALE: Three bedroom house in city limits. \$36,500. 269-4536 days. 269-4124 nights. 24-2tc

TWO BEDROOM house: Five years old, rock with redwood, 1 1/2 acres, 2 1/2 miles west of Mountain View on Hwy. 66. \$39,500. 269-3390 after 5 p.m. 23-4tf

FOR SALE: Good house and 79 acres, city water, 2 1/2 miles off Hwy. 66. Owner financing. 746-4374. 22-1tf

BEST BUY IN TOWN... on 3 bedroom; 2 bath home with large country kitchen. Vinyl siding and rock exterior. Beautiful orchard, super garden, workshop, greenhouse... many extras! Call 269-3723 for details. 21-4tf

FOR RENT or Sale: Two bedroom, one bath home on three wooded acres. Deck, wood burning fireplace, recently redecorated. Call (214) 542-4232. 6-8:30 p.m. 24-4tf

MOBILE HOMES and housing for sale or rent: 269-3298 or 269-8619. 15-1tf

IDEAL COUNTRY home and property: 2500 sq. ft., three bedroom home on 70 private acres, two full baths, large master bedroom, large kitchen with butcher block and center island, screened porch and deck off kitchen, fireplace in great room, wood furnace, barn, greenhouse, three ponds, pastures, fencing, five miles from Mountain View. Call owner after 5 p.m. 269-4760. 13-1tf

FOR SALE: Large house overlooking White River Valley and Allison. City water, beautiful view. Shown by appointment. 585-2228. 11-1tf

41 1/2 ACRE mountain top farm. Breezy, good well, good spring, approximately 15 acres meadows, 25 1/2 acres timber, 2 story unfinished house, good barn, other buildings. 269-3769. 24-4tf

For sale - Home, 3 1/2 blocks from court square, living room, kitchen/dining area, large bedroom / master bath, utility room & 1/2 bath, carpeted and no-wax vinyl floorings; pecan wood paneling, well insulated, Frigidaire electric stove; Kitchenaid dishwasher; Lady Kenmore washer and dryer, carport with workshop, paved drive, neat, clean and reasonable. Ideal for couple or single person. Phone 269-8110 mornings.

Yard Sales

BIG 3 Family Yard Sale: Thursday, Friday & Saturday, 9-5, Hwy. 5 South, 4th house on right. Lots of everything. 24-1tf

YARD SALE: Saturday, Sept. 17, 8 a.m., Church Street, behind Methodist Church. Lots of children's clothing, changing table and lots more. 24-1tf

THREE FAMILY Yard Sale: Saturday only. All sizes clothing, Mary Kay cosmetics at 40% off; apples, \$5 per bushel. At Hugh Southern residence, two miles west of Timbo on Hwy. 66. 24-1tc

FOUR FAMILY Yard Sale: Friday, Sept. 16. Women's, small through size 14; books and misc. items. Beige trailer, corner of Webb and Massey. Start at 8 a.m. 24-1tf

TWO FAMILY Yard Sale: First house east of Nu-Way. September 16. If rain, the 17th. Boy's clothes, junior and women's clothes, lots of other items. 24-1tp

BIG COMMUNITY Yard Sale: Saturday, the 17th, at the park. Two miles east of Big Flat on Hwy. 14. For information call 746-4682. 24-1tc

THREE FAMILY Yard Sale: Thursday, Friday & Saturday. Turn at Ivy's Place, 4th house right before shop. Two motorcycles, tools, 200 lb. of nails, 600 bricks, color TV, boys, size 10, girls, 4-6; adult clothing and household. 269-8924. 24-1tp

YARD SALE: Turn left across from Prissy Arts. Third house on left. 269-3785. Friday and Saturday, 16 & 17. 24-1tc

THE BIGGEST yard sale you've ever seen! Washer, dryer, freezer, couch & chair, stereo, TV, vacuum cleaner, women's & men's clothing of all sizes. You name it, we've got it. Friday and Saturday, 8-4. Last house on right down telephone office hill. Brenda Vance and Thurma Stewart. 269-8112. 24-1tc

YARD SALE: Saturday only, 9-4, at 1212 Maple Drive, old Hwy. 66. Lots of craft supplies, clothes, books and much more. Everything priced to sell. 24-1tf

FOR SALE: Some nice corn fed butcher hogs, weight around 200 pounds. Selmer Cates, Leslie, AR. 447-2202. 23-4tf

FOR SALE: Fescue seed, 30 cents per pound. 948-2259. 23-2tf

For Sale Blueberry Plants Potted, Field ready State Inspected Phone 746-4361

Real Estate

Foothills Real Estate P.O. Box 886 Mountain View, Ark. 72560 (501) 269-4230 JOHN COLLINS Salesman Broker

Real Estate, Inc. 414 E. Main, P.O. Box 357 Mountain View, Arkansas 72580 (501) 269-3105

#723 - ABSOLUTELY PERFECT. Hide-a-way. 40 acres of beautiful pine and hardwood forest. 2 year-round springs and small branch. Large garden area, small orchard. Rustic stone cabin is unique, fireplace, wood stove and some furniture. Electricity available but not in cabin. Vacation place with no expenses. \$23,100 cash.

#T-1 - TWO BEDROOM, one bath home on 5 acres. City water, 9 miles from town. Three years old. \$28,500, 20% down, balance 10% interest.

#744 - BROILER HOUSE. Three bedroom, one bath home on 37 acres. Land is largely open. Barn, two ponds. Would need a new well to run chicken house. This place is priced right for quick sale. \$46,500, some terms possible. Won't last long, so hurry. If you want in the broiler house business, cheap.

J.R. Cook, Broker Ken Jones, Sales - Night (501) 746-4713

Animals

PART Beagle pups, free, 3-4 months old. 269-8482. 23-2tf

HAPPY JACK Trivermide: Recognized safe & effective by U.S. Bureau of Veterinary Medicine against hook, round & tapeworms in dogs & cats! Adams Feed & Seed, Hwy. 14 East. 24-1tc

POODLES for sale: Two males, two females. Registered eight weeks old. 652-3527. 23-2tf

Thank You

We, the family of Carlis and Kim Rose would like to take this opportunity to say thanks to all friends, relatives and loved ones for the cards, phone calls and prayers during Carlis' illness. Also a special thanks to all the people of Pleasant Grove and St. James communities for the ple supper and donations. It is greatly appreciated. Love, Carlis, Kim & Bryan Rose 24-1tc

The families of Retha Burns and Ronnie Brightwell wish to say a special thanks to each person who, in any way, assisted and supported us during the loss of our loved ones. We are all eternally grateful to each of you. Sincerely, Frances & Pat & Families Denise & Dayna & Families Malinda & Josh Brightwell Misty & Brandi Brightwell 24-1tp

For White Oak Cooperage Logs and Stave Bolts. Haul to Independent Stave Company, Leslie, Arkansas, Phone: 501-447-2905. 13-13tc

Any information: George Washington Bennett - lived in Stone County 1888-1895. Wife, Emma, and son buried - unknown grave. Notify Emma Erickson, RR 1, Viking, Minnesota 56760. 218-523-4195. 23-2tp

Notice

Ramsey, Sisk family Reunion, September 24, Blanchard Springs Park. Bring covered dish, lawn chairs. All relatives welcome. 24-2tp

MORE \$\$\$\$ For White Oak Cooperage Logs and Stave Bolts. Haul to Independent Stave Company, Leslie, Arkansas, Phone: 501-447-2905. 13-13tc

Any information: George Washington Bennett - lived in Stone County 1888-1895. Wife, Emma, and son buried - unknown grave. Notify Emma Erickson, RR 1, Viking, Minnesota 56760. 218-523-4195. 23-2tp

Legal notice

Bid Notice Timbo School has the following items for sale. Six Warm Morning butane stoves (50,000 BTU) - \$125 each. Seven floor furnaces (64,000 BTU) - \$150 each. Contact Ron Lee at 746-4303, if interested. Sealed bids will be taken on two Chevrolet school buses (1966 & 1970). Mail bids by October 6 to Timbo School, P.O. Box 40, Timbo, AR 72680. The board reserves the right to refuse any or all bids. 24-3tc

NOTICE IN THE PROBATE COURT OF STONE COUNTY, ARKANSAS IN THE MATTER OF THE ESTATE, DECEASED JAMES JEFFERSON DORR, DECEASED NO. P 88-21

Last known address of decedent: 4326 Manning Lane, Dallas, Texas 75220. Date of Death: July 12, 1987. An Instrument dated 6th day of January, 1982 was on the 23rd day of August, 1988, admitted to probate as the last will of the above named decedent and the undersigned has been appointed administrator thereunder. A contest of the probate of the will can be effected only by filing a petition within the time provided by law. All persons having claims against the estate must exhibit them, duly verified, to the undersigned within three (3) months from the date of the first publication of this notice, or they shall be forever barred and precluded from any benefit in the estate. Provided, that claims for injury or death caused by the negligence of the decedent shall be filed within six (6) months from the date of the first publication of the notice, or they shall be forever barred and precluded from any benefit on such estate. This notice first published September 14, 1988. Mabel Dorr Administrator 4326 Manning Lane, Dallas, TX 75220 24-2tc

NOTICE IN THE PROBATE COURT OF STONE COUNTY, ARKANSAS IN THE MATTER OF THE ESTATE, DECEASED JAMES JEFFERSON DORR, DECEASED NO. P 88-21

Last known address of decedent: 4326 Manning Lane, Dallas, Texas 75220. Date of Death: July 12, 1987. An Instrument dated 6th day of January, 1982 was on the 23rd day of August, 1988, admitted to probate as the last will of the above named decedent and the undersigned has been appointed administrator thereunder. A contest of the probate of the will can be effected only by filing a petition within the time provided by law. All persons having claims against the estate must exhibit them, duly verified, to the undersigned within three (3) months from the date of the first publication of this notice, or they shall be forever barred and precluded from any benefit in the estate. Provided, that claims for injury or death caused by the negligence of the decedent shall be filed within six (6) months from the date of the first publication of the notice, or they shall be forever barred and precluded from any benefit on such estate. This notice first published September 14, 1988. Mabel Dorr Administrator 4326 Manning Lane, Dallas, TX 75220 24-2tc

NOTICE IN THE PROBATE COURT OF STONE COUNTY, ARKANSAS IN THE MATTER OF THE ESTATE OF Loda Coward, Deceased No. P-88-20

Last known address of decedent: Compton's Oak Grove Lodge, Mountain View, AR 72560. Date of death: July 13, 1988. An instrument dated March 2, 1988, was on the 18th day of August, 1988, admitted to probate as the last will of the above named decedent, and the undersigned has been appointed executrix thereunder. A contest of the probate of the will can be effected only by filing a petition within the time provided by law. All persons having claims against the estate must exhibit them, duly verified, to the undersigned within three months from the date of the first publication of this notice, or they shall be forever barred and precluded from any benefit in the estate. This notice first published 13th day of September, 1988. Wilma L. Branscum Executrix P.O. Box 22 Newnata, AR 72657 24-2tc

ORDINANCE NO. 88-6 AN ORDINANCE AMENDING APPROPRIATION ORDINANCE BE IT ENACTED BY THE QUORUM COURT OF THE COUNTY OF STONE, STATE OF ARKANSAS: AN ORDINANCE TO BE ENTITLED: AN ORDINANCE AMENDING STONE COUNTY OPERATING BUDGET FOR 1988 FOR THE PURPOSE OF APPROPRIATION OF FUNDS IN BUDGET CATEGORIES, EXPECTED REVENUES, COUNTY GENERAL, ROAD, AND FOR OTHER PURPOSES. SECTION I: A. Appropriate \$38,000.00 to Industrial Revolving Loan Account Line Item 4991 Funds SECTION II: Sheriff's Office - Appropriate to Line Item #586 - Drug Task Force \$1162.62. SECTION III: This Ordinance is an Amending and Appropriation Ordinance and shall be effective immediately upon passage by the Quorum Court and approval by the Stone County Judge and apply to fiscal year 1988. ATTEST: Glenda White County Clerk APPROVED: Coleman Gammill County Judge 24-1tc

THE CITY OF Mountain View Water and Sewer Department and the City Planning and Zoning Office is conducting a meeting on the 19th day of September 1988 at 7:00 p.m. in the Mountain View City Hall. The purpose of this meeting will be to discuss the building, plumbing and electrical codes established for the City of Mountain View. The City of Mountain View urges you to attend this important meeting. 24-1tc

Notice The Tri-County School District will hold its annual meetings to report to the public on September 19th and 22nd. The meeting on September 19th will be held in the high school cafeteria at Big Flat. The meeting on September 22nd will be held in the elementary school cafeteria at Fifty Six. Each meeting will begin at 7:00 p.m. The purpose of the meetings will be to explain the school's policies, programs, and goals. School administrators and board members will be present to answer questions from those in attendance. All district residents are invited to attend one of the two meetings to learn more about the operation of their schools. Refreshments will be served. For more information, please contact Dr. Hugh Pace, Superintendent, at 448-2594. 24-1tc

Mountain Lodge APARTMENTS - MOUNTAIN VIEW, ARKANSAS SENIOR CITIZENS Apply Now For OCTOBER OCCUPANCY Live in your very own snug, secure maintenance and carefree apartment designed especially for you! No-wax vinyl floors, electric stove, frost-free refrigerator, decorator mini-blinds, carpet throughout and central heat and air, just to name a few of the comforts that await you at Mountain Lodge located on King Street. Don't delay, call now to reserve your new apartment. See On-Site Manager at Apartment #45, or call Central Office Collect at 425-6076. Rental Assistance Available. Equal Housing Opportunity

Real Estate, Inc. 414 E. Main, P.O. Box 357 Mountain View, Arkansas 72580 (501) 269-3105 #723 - ABSOLUTELY PERFECT. Hide-a-way. 40 acres of beautiful pine and hardwood forest. 2 year-round springs and small branch. Large garden area, small orchard. Rustic stone cabin is unique, fireplace, wood stove and some furniture. Electricity available but not in cabin. Vacation place with no expenses. \$23,100 cash. #T-1 - TWO BEDROOM, one bath home on 5 acres. City water, 9 miles from town. Three years old. \$28,500, 20% down, balance 10% interest. #744 - BROILER HOUSE. Three bedroom, one bath home on 37 acres. Land is largely open. Barn, two ponds. Would need a new well to run chicken house. This place is priced right for quick sale. \$46,500, some terms possible. Won't last long, so hurry. If you want in the broiler house business, cheap. J.R. Cook, Broker Ken Jones, Sales - Night (501) 746-4713

Notice The Tri-County School District will hold its annual meetings to report to the public on September 19th and 22nd. The meeting on September 19th will be held in the high school cafeteria at Big Flat. The meeting on September 22nd will be held in the elementary school cafeteria at Fifty Six. Each meeting will begin at 7:00 p.m. The purpose of the meetings will be to explain the school's policies, programs, and goals. School administrators and board members will be present to answer questions from those in attendance. All district residents are invited to attend one of the two meetings to learn more about the operation of their schools. Refreshments will be served. For more information, please contact Dr. Hugh Pace, Superintendent, at 448-2594. 24-1tc

**Legal notice**

**Public Hearing**  
A public hearing will be held on October 3, 1988 at 7:00 p.m. at the Mountain View City Hall to discuss a proposed zone change from public to residential 1. NW1/4 SW 1/4 Section 1 T 14 W R11 W owned by Peggy Chapman.

24-2tc

**LEGAL NOTICE**

District Ranger Richard Mills welcomes public comments on 17 local areas within the Sylamore Ranger District of the Ozark National Forest for which management prescriptions are being prepared.

"We study all compartments on the Sylamore Ranger District every 10 years," Mills said, "and these 17 acres are the ones the Forest Service will enter for management purposes in fiscal years 1990 and 1991."

A compartment is a section of National Forest land approximately 1000 to 1500 acres in size. The Forest Service analyzes each compartment every 10 years to determine wildlife food, water, and cover needs, landline maintenance needs, timber harvest and reforestation needs, road maintenance and needed closures or road improvements, stream protection, visual resource improvement, and archaeological protection provisions. "These analyses follow the Land and Resource Management Plan for the Ozark National Forest," Mills emphasized, adding that "issues applying to the compartments identified as a result of public comments, will also be addressed in these analyses."

**Legal notice**

Compartments being studied include: 20 east of Cataract Creek, 24 east of Push Mountain Tower, 25 in Birmingham Hollow, 26 north of Cole Fork Creek, 56 on Roasting Ear Creek, 73 west of Cataract Creek, 74 north of Jacks Branch, 75 south of Jacks Branch, 78 east of Sandy Road, 6 on Twin creeks, 33 west of Caps Fork, 43 east of Sandstone Hollow, 46 on Chisholm Hollow, 77 east of Push Mountain Tower, 79 south of Cole Fork Creek, 101 south of Ramsey Knob, and 104 south of Stewarts Fork.

"We welcome the public's comments and suggestions for management of their national forest in all our activities," Mills said. Comments need to be into the Sylamore Ranger District Office by September 30, 1988.

For more information contact: District Ranger, Sylamore Ranger District, Ozark National Forest, P.O. Box I, Mountain View, AR 72560 or call (501) 269-3228. Office hours are 7:30 - 4:00 p.m., Monday through Friday.

24-1tc

**Notice of Annual School Election in Mountain View School District No. 30 of Stone County, Arkansas.**

Notice is hereby given that the annual school election in the above named district will be held on September 20, 1988. Polls will open at 8:00 a.m. and close at 7:30 p.m. The following questions will be submitted:

(1) To elect one member to the Board of Directors for a term of five years.

**Legal notice**

(2) To submit a continuing school levy tax of 21 mills. This total tax levy includes 8.3 mills for Maintenance and Operation of schools and 12.7 mills for Debt Service. This tax levy does not constitute an increase over what was voted in March, 1987.

The polling places shall be as follows:

1. Arkansas Power & Light Reddy Room
  2. Pleasant Grove Fire Station
- Given this 25th day of August, 1988.

Board of Directors of Mountain View School District No. 30 of Stone County, Arkansas.  
Charles Ramsey, President  
Jim Nesbitt, Secretary  
22-3tc

The Rural Special School Board will hold a public meeting on September 22 at 8:00 p.m. at the Rural Special Cafeterium for the purpose of discussing the policies, programs, and objectives of the Rural Special School. All parents and other members of the community are encouraged to attend and ask questions or make suggestions.

24-1tc

**Notice of Annual School Election in Tri-County School District No. 56 of Baxter, County Arkansas**

Notice is hereby given that the annual school election in the above named school district will be held September 20, 1988, for the following purposes:

To elect 2 members to the Board

**Legal notice**

of Directors, each for a term of 3 years;

To elect 1 member to the County Board of Education from Zone No. 1 for a term of 5 years;

To submit the question of voting a total school tax levy of 21.5 mills. This total tax levy includes 17.3 mills for maintenance and operation of schools, 0 mills for capital outlay and 4.2 mills for debt service previously voted as a continuing debt service tax and pledged for the retirement of existing bonded indebtedness. Surplus revenues produced each year by debt service millage may be used by the district for other purposes. This is the present school millage and does not represent an increase.

The polls will open at 8:00 a.m. and will close at 7:30 p.m. at the following places;

- |                                                                   |                    |
|-------------------------------------------------------------------|--------------------|
| Ward                                                              | Big Flat City Hall |
| Prelnct                                                           | Big Flat City Hall |
| Big Flat, Cedar Grove (Searcy)                                    | Big Flat City Hall |
| Round Mountain, Farris (Stone)                                    | Big Flat City Hall |
| Culp - Table Rock Community Building                              | Big Flat City Hall |
| Fifty-Six - Fifty-Six DAV Building                                | Big Flat City Hall |
| Optimist (Stone) - Church of God of Prophecy - Sugar Loaf Mission | Big Flat City Hall |

Given this 24th day of August, 1988.

Board of Directors of Tri-County School District No. 56 Baxter County, Arkansas  
By Jim Butler, President  
By David Long, Secretary

23-2tc

**Legal notice**

Notice is hereby given that the annual school election in Rural Special School District #2 will be held on September 20, 1988, for the purpose of electing one

**Legal notice**

board member and voting for or against present tax.

The polls will open at 8:00 a.m. and close at 7:30 p.m. at Rural Special Old Main.

24-1tc

**REQUEST FOR BID**

North Arkansas Human Services System, Inc. is seeking bids on the following automobile type:

1989 Model, Full Size, Six Passenger, Four-Door Sedan, Full Frame, Wheel Base of 112" or Greater, V-8, 5.0 Liter or Equivalent Engine, Built in the U.S.A.

Vehicle must have as a minimum the following equipment:

1. Automatic overdrive transmission
2. Cruise-Control
3. Reclining front passenger seat with armrests
4. 6 way power driver seat
5. Adjustable steering wheel
6. Split front seat
7. Air conditioning
8. Cassette/AM-FM radio
9. Exterior right and left mirrors/remote control
10. Door edge guard
11. Trim package equal to or greater than Caprice Classic, Crown Victoria, Fifth Avenue, etc.

The price bid should include all freight charges, preparation charges, and any other charges necessary to prepare the vehicle for road ready use to be picked up at the selling dealer's place of business.

Bids are to be submitted in a sealed envelope and mailed to:

AUTO  
P.O. Box 2578  
Batesville, AR 72503

or said sealed bids may be delivered by hand to Central Administrative Offices, 1800 Myers Street, Batesville, Arkansas. All bids must be received no later than 1:00 p.m., Wednesday, September 21, 1988.

North Arkansas Human Services System, Inc. reserves the right to accept or reject any and/or all bids.

CAR CHOSEN MUST BE AVAILABLE FOR PICK UP AT LOCAL DEALERSHIP NO LATER THAN ONE WEEK AFTER SUCCESSFUL BIDDER IS NOTIFIED THAT THEIR BID HAS BEEN ACCEPTED.

# Business And Service Directory

**Concrete/Masonry**

**Misenheimer Concrete Finishing**  
Forming - Pouring  
Variety of finishes on any size slab or other concrete work.  
Gary Misenheimer  
269-8855

**Mountain View Ready Mix**  
Concrete, river dirt, fill gravel, masonry sand, sand & gravel, crushed limestone, backhoe work, install septic tanks, grader work, road tile. Also small tracts of land for sale. Call for prices.  
269-3845

**Heating & Cooling**

**FREE Computer Home Energy Audit**  
Hinkle Heating & Air Conditioning  
PO Box 182, Mtn. View, AR  
269-3242  
**LENNOX**  
AIR CONDITIONING & HEATING

**Health Care**

LET US FILL YOUR NEXT PRESCRIPTION  
Jerry Moody, druggist  
Roy Bailey, druggist  
BEST DRUG STORE  
269-4329

Free Blood Pressure Checks  
CRYMES HOME HEALTH CARE  
Anytime during office hours. Open Monday thru Friday, 8-4:30 p.m. Located in "A" wing of Compton's Oak Grove Lodge. Phone 269-4316.

Do you want the very best in health care services? Good, so do we!  
Compton's Oak Grove Lodge  
Oak Grove Street  
Mountain View, AR 72560  
269-3886 269-4316  
Skilled nursing care • Residential care • Home health care • Lifeline

**Auto Services**

**Hopper's Auto Parts**  
Jefferson & Franklin Streets  
269-3406

**Contractors**

**GENERAL CONTRACTOR STEVENS READY MIX CONCRETE & CONST. CO.**  
269-8555

**CONTRACTING & ESTIMATING; Service, Commercial & Residential Remodeling.** Shane McElroy. Outside Sales. 269-3808. Modern Builders Home Center, Mountain View, Ark.

**Sims-Mitchell**  
General Building Contractors  
Quality Work-Reasonable Rates  
Jerry Sims Jimmy Mitchell  
269-8924 269-8498

**Windows**  
Custom Built, any size, thermopane glass and window walls, screens, store fronts, custom made awnings, commercial or residential. Mountain View Glass. Ph. 269-3298, after hours 269-8619.

custom residential and commercial interiors  
complete woodworking services  
Jim Good 363-4316

**Construction**

**Cates Bulldozer Service**  
Any type dozer work  
Experienced • Quality Work  
David Cates  
Owner • Operator  
269-8416  
After 4:30 p.m.

**Woodard Dozer Service**  
If you need dozer work done, ponds, roads, clearing, building pads, or dozer work of any kind. New dozer, free estimates, reasonable.  
Call Glen Woodard  
Days 591-6685  
Nights 591-6655

**Farm Equip/Supply**

**NORTH ARKANSAS FARM SUPPLY**  
Serving farmers for a generation  
Main St. Mtn. View  
269-3356

**STONE COUNTY IRONWORKS REPAIR SHOP.** Farm equipment repair, flat beds, trailer hitches, blacksmithing. Fireplace covers, metal fabrication of all types. All work is guaranteed. Ph. 269-3620.

**Mobile Homes**

**Clark Mobile Homes**  
Hwy. 16 E. Shirley, AR  
All types of mobile homes - new and used - bought and sold. Call locally.  
269-4623

**H & S Mobile Home Sales**  
Low Price - Big Selection  
Travel trailers and storage buildings  
Set-up and delivery

**Insurance**

**SHELTER INSURANCE**  
LIFE HEALTH HOME CAR  
Edwin Luther, agent  
Phone 269-3414  
Main Street  
Mtn. View, AR 88

**DEARIEN REAL-ESTATE, INSURANCE & BONDS**  
Mrs. Muriel Dearien  
269-3869 or 269-3479  
Mountain View, AR

**Your Metropolitan Life Sales Representative in Stone County is Jack Hatley GET MET. IT PAYS.**  
Metropolitan Life AND AFFILIATED COMPANIES  
Jack Hatley  
269-3347  
Mountain View, AR

**Miscellaneous**

**COMPUTER CONSULTANT**  
Sales & Service  
Hardware and software analyst, training and teaching, computerized book-keeping.  
746-4744

**Louise Larson Cleaning Service**  
Shampoo & Scotchguard  
746-4215

**Mtn. View Pawn Shop**  
Look for us at the west end of McClung Ford Building  
269-8127

**Gift Shops**

**Exclusive dealer for Russell Stover Candies**  
**Woods Pharmacy**  
on the square  
269-3253

**Garden Supply**

**Grace Garden**  
Crepe Myrtles - Blooming plant (red, pink, purple) \$4.50 - \$17.50.  
269-8947

**Financial**

**IDS PERSONAL FINANCIAL GUIDANCE**  
IDS Financial Services Inc.  
IDS Life Insurance Company  
P.O. Box 570A  
Mountain View, AR 72560  
Jana Richardson  
Registered Representative  
Personal Financial Planner  
269-4145

**Professional Income Tax Preparation and tax consulting**  
Hughes, Welch, Lecht- enberger, Milligan and Perryman, Ltd. C.P.A.  
In Mountain View see Steve Perryman on the square  
269-4349

**Miscellaneous**

**Roto Rooter**  
Sewer and drain Service  
Septic tank cleaning  
Serving Stone and Searcy Counties 15 years experience. For fast and dependable service.  
Call 269-3064  
Don Trammell and Son

**Ozark Aluminum Co.**  
We buy aluminum cans  
Copper, aluminum, radiators and batteries  
269-3015 or 251-3112

**Blue Mtn. Enterprise**  
Custom Hardwood Furniture, Arts and Crafts, Cabinets and Vanities  
Paul Gillan or Fred Fletcher  
746-4744

**Ark. Traveler Chimney Sweep**  
Serving your area for over 9 years. Fully certified and insured. Still \$42 to \$48  
Call today.  
363-4584  
Ben Barton  
FREE INSPECTION

**NOW OPEN**  
Bill's Gun and Pawn Shop  
Main Street, Hwy. 5  
Calico Rock, AR  
279-3733

**Outboard Motor Repair**  
•Motors for sale  
•Large parts inventory for new and used motors  
•Specialize in Evinrude and Johnson  
•We buy salvage  
Sam Green  
269-8763  
Hwy. 5 South Iron Mountain

**MARY KAY**  
WE TEACH SKIN CARE  
Results-oriented products. Dermatologist tested. Mary Kay has a skin care system for you. Call today.  
Professional Mary Kay  
Skin Consultant  
Allene Winningham  
269-8012

**Miscellaneous**

**Mountain View School of Ballet**  
Ballet classes for all ages and a Beginner Adult Jazz Class  
269-4555 or 269-8505

**LONG'S TELEVISION REPAIR SHOP**  
•Sales & Service  
•Free Estimates  
•Next to Town & Country  
269-4025

**Old Fashion Stripping, Refinishing & Reccaning "Done by Hand"**  
Home: 746-4222  
FREE ESTIMATES

**HOUSE CLEANING SERVICE**, over 10 years experience, call Donna Schuh, 746-4762 after 5:00 pm.

(501) 269-8637  
House plans

**CUSTOM DRAFTING AND DESIGN**  
by Rene'  
510 Oak Street  
P.O. Box 795  
Mtn. View, AR 72560  
RENE TURNER  
CHIP TURNER

**Appliance Repair**  
Specializing in microwave ovens  
also repair washers and dryers, refrigerators, ranges and dishwashers.  
269-8583

**BILT RITE STRUCTURES**  
Discover the Modern, Economical Way To Better Building.  
SPECIALIZING IN:  
•Horse Barns  
•Storage Buildings  
•Mini-Marts  
•Shops-Garages  
•Commercial Bldgs.  
DIVISION OF SENTINEL INDUSTRIES, INC.  
HEBER SPRINGS, AR.  
362-9201  
CALICO ROCK, AR. 297-3724

# Local fire fighters assist in effort to save forests

**By Fran Fulton**  
Richard Mills, district ranger for the Sylamore National Forest, went to bat last week for his beleaguered colleagues in the northwest who are coming under increasing criticism as the damage from wildfire mounts.

Crews from the National Forest Service and other agencies have been powerless to stop the raging wildfires, which have already laid waste to an area larger than the state of Connecticut.

Overall, the damage is considered the worst the country has seen in 30 years. Yellowstone, in particular, is threatened by the most dangerous fires in human memory.

"The whole west is burning," Mills said. "Most of the publicity has been about Yellowstone, but there are a whole bunch of big fires all through that country, in Montana, Wyoming and Idaho." More than two million acres in Alaska alone have been lost to fire, as well as smaller acreage in California, Oregon and Utah.

The culprit? The blazes were touched off by lightning, Mills said. Fanned by winds often

as high as 50 miles an hour, they spread rapidly through the tinderbox-dry woods.

Members of Congress have blamed federal authorities for much of the damage, contending that their hands off policy towards wildfires allowed them to get out of control.

This couldn't be further from the truth, the local ranger maintains. He pointed out that the "let burn" policy applies only to wilderness, remote locations where access by firefighters is difficult and no threat exists to developed areas.

Only about 10 percent of the fires now burning fall into this category

"The more recent fires, the ones that threaten buildings and towns and Old Faithful, they attacked just as soon as they started," he said. "But a lot of people get these mixed up with ones in wilderness areas."

He added the response of the forest service and other agencies has been handicapped by far-ranging nature of the crisis: "This has put a real strain on our

manpower and our resources."

Crews have been recruited from across the country, including the Sylamore District. These firefighters are having to spend four weeks on the front line, about twice as long as is usually the case.

"A lot of them are getting pretty weary," he noted.

Little relief from the weather was forecast last week, and Mills said he wouldn't be surprised to get a call for even more personnel. "They may strip us down to where there's just the ranger and a couple of clerks," he said. "But it's a national emergency, and it's a higher priority."

Normally, Arkansas can spare fire crews during September because the high-danger season doesn't start until the leaves and other vegetation dies later in the fall. This year could have been different, however, as the dry weather contributed to a record number of fires this spring and early summer.

Fortunately, rainfall picked up

again in July and eliminated the hazardous conditions. For this, Mills said he was very grateful.

Seven staff people from Sylamore joined a crew from the Ozark National Forest fighting a 86,000-acre blaze near the edge of Yellowstone National Park. They are Mike Gavin, Earl Hendrix, Terry Pogue, Louie Bran-

scum, Paul Tibbon, Ralph Odegard and Ernest Shipman. An eighth, Bob Oats, was detailed to another 25,000 acre fire, also on national forest land bordering the park.

Mills received notice Friday to send six fresh firefighters out west. Jim Steele, L.J. Treat, Stan Brown, Ronnie Anderson,

Joel Rowe and Chuck Huff left the same day for either Montana or Wyoming.

In all, 14 personnel from the Sylamore District are now involved in the massive effort.

Monty Maldonado, another Sylamore employee, returned last week from firefighting duty in California.

## New arrivals

Kyle Hunter Passmore is proud to announce the birth of his brother, Bret Trapper. Bret arrived August 31, 1988 at 11:20 p.m. at the Calico Rock Medical Center. He weighed 8 pounds, 13 ounces and was 21" long.

Parents are Tony and Penny Passmore of Onia. Paternal grandparents are Lester and Delpha Passmore of Onia. Maternal grandparents are Savage and Retha Holt of Timbo. Great grandmothers are Tina Moore of Onia and Buel Holliman of Harriet.

Rick and Ronda Pepper of Greenbrier are proud to announce the birth of their son, James Edward. James was born September 1, 1988, at 11:02 a.m. at the Van Buren County Hospital in Clinton. The young man weighed 8 pounds and 9 1/2 ounces and was 19 inches long.

The maternal grandparents are Travis and Juanice Castleberry of Fox. Paternal grandparents are James L. and Jeanne Pepper of Bloomfield, Missouri. Maternal great-grandmother is Irma Holland of Fox.

## Election officials are listed

The following are clerks, judges and polling locations for the school elections set for September 20.

Positions 1-3 are judges, 4-5 are clerks and 6 is the sheriff.

Mountain View - AP&L Reddy Room: 1. Margie Moore. 2. Mae Dell Lancaster. 3. Dorothy Glenn. 4. Judith Nolan. 5. Carmen Powell. 6. Herbert Poff.

Pleasant Grove - Fire Station: 1. Ben Myers. 2. Patricia York. 3. Ethel Blair. 4. Margaret Norris. 5. Bernice Ginn. 6. Sidney Younger.

Rural Special - School: 1. Lela M. Schiefer. 2. Mabel Linville. 3. Reba J. Ross. 4. Saly Schiefer. 5. Sharon Callahan. 6. Adelbert E. Richardson.

Timbo - School: 1. Junior Ivy. 2. Lois Farris. 3. Sylvia Gammill. 4. Omalee Daughtery. 5. Vertie Gammill. 6. Raymond Daughtery.

Onia - Landmark Missionary Baptist Church: 1. Veaner Brewer. 2. Ethel Treat. 3. Gary Fulks. 4. Nadine Beare. 5. Angela Lee. 6. Elmer Fletcher.

Flag - Church: 1. John Hern. 2. Dovie Simmons. 3. Callie Sitton. 4. Penelope Wenzel. 5. Kim Hutcheson. 6. Richard Lavell.

Big Springs - Baptist Church: 1. Peggy Trammell. 2. Betty Avey. 3. Jeanetta Avey. 4. Jo Ann Jones. 5. Lillie Powell. 6. Hubert Powell.

Absentee: 1. Jerry Fletcher. 2. Vernon Lawrence. 3. Jack Poff. 4. Von D. Jeffery. 5. Fern Mitchell. 6. George Jason.

Tri-County School - Fifty Six DAV Building: 1. Coleen Lancaster. 2. Pat Deatherage. 3. Amalea Sutterfield. 4. Esker Hudspeth. 5. Dorothy Thomas. 6. Merl Shipman.

Tri-County School Optimus - Church of God of Prophecy: 1. Oma Cartwright. 2. Fern Fitzpatrick. 3. Thomas Fitzpatrick. 4. Tinnie M. Cartwright. 5. Myrtle Flannery. 6. Junius Hamby.

## Mayor's Activity Council to meet this Thursday

A meeting of the Mayor's Activity Council will be held Thursday at 6:45 a.m. in the small auditorium of the Ozark Folk Center.

The agenda will be a report on Quorum Court and plans for promoting October through December events, soliciting help with

the Beanfest for the Stone County Council on Tourism, and any other business relating to promotion of Mountain View/Stone County.

Everyone is urged to attend and assist in making plans for future promotion of tourism and events for our area.

### FISH

For Pond and Lake Stocking

|                               |                                                |
|-------------------------------|------------------------------------------------|
| Channel Catfish - 4-6" - 6-8" | Farley's F-1 Super-blue Hybrid Bluegill - 1-3" |
| Crappie - 1-3"                | Bass - 2-4" - 3-5"                             |
| Fathead Minnows               | Grass Carp                                     |

World's Largest Hybrid Bluegill Dealer With Over 400 Acres of Ponds.  
 Delivery will be: Tuesday, September 20 Mountain View North Arkansas Farm Supply 10:30 to 11:30 a.m. - Phone 269-3358 (Orders do not have to be placed in advance.)

To place an order call your local store or call: Collect in state 477-5530 Out of State 1-800-247-2615

**FARLEY'S FISH FARM**  
CASH, ARKANSAS 72421

On November 8, 1988 vote for:

**William H. Wade, Republican**  
Justice of Peace  
District 9,  
Stone County Arkansas

This candidate believes:

1. Government is for and by the people.
2. People are our most important resource and the opportunity for successful development must exist.
3. Government is the servant of the people and commerce, and must be responsive, responsible and accountable in providing essential services (adequate and/or safe; roads, water supply, waste and sewage disposal, security and disaster control).
4. He has the essential education, understanding, experience and desire to effectively contribute to the resolution of current and future problems. Pragmatic in philosophy, conservative in that tax revenue is limited, and must be effectively applied to provide essential services that promote the health, welfare and safety of citizens and commerce.

Paid political ad by William H. Wade

## SAVE \$3

on our 13-piece portrait package



Now \$6.95 (reg. \$9.95)

Bring in any lower-priced advertised offer and we'll match it!

We welcome everyone... babies, children, adults and family groups. No appointment is ever necessary. Satisfaction guaranteed! Poses our selection. Black and White Backgrounds, Double Exposure and other Special Effects Portraits not available in advertised packages. \$1.50 for each additional person in portrait. Minors must be accompanied by an adult. \*approximate size

Studio Hours: Daily 10 a.m. until one hour prior to store closing; Sunday (where open): store opening until one hour prior to store closing

**WAL-MART**  
*Pictureland Portrait Studio*

The photographer will be here through Saturday, Sept. 17  
**Mountain View, AR**  
**315 Sylamore Avenue**

# Back to School SAVINGS!

## WASHER-DRYER SALE

Once a year! This is your chance to SAVE BIG on ALL quality Whirlpool Washers and Dryers



**Whirlpool LARGE LOAD CAPACITY WITH 2 AUTOMATIC WASH CYCLES**

• 2 Water Temp Combinations

**\$329**

LA3400XP

**FREE DELIVERY SALE ENDS SEPT. 30**

**FINANCING AVAILABLE WITH APPROVED CREDIT**

**SAVE \$50 ON OUR BEST BUY WASHER**



**Whirlpool WASHER WITH 5 AUTOMATIC CYCLES AND 3 WATER LEVELS**

- Easy-Clean lint filter
- Automatic cool-down care

**\$379**

LA 5300 XP White

**SAVE \$50 ON OUR BEST BUY DRYER**



**Whirlpool ELECTRIC DRYER with 4 DRYING CYCLES AND 3 TEMPERATURE SETTINGS**

- "No Iron" cool down
- Extra large lint screen

**\$289**

LE5800XP

**ALL Whirlpool WASHERS AND DRYERS ON SALE**



**Whirlpool**

LA5700 LE5700

**SAVE \$110**

**WHEN YOU BUY THIS DELUXE WASHER LAUNDRY PAIR DRYER**

|                     |                         |
|---------------------|-------------------------|
| LA5700XSW 27"       | LE5700X 29"             |
| 2 speed 8 cycle     | Large capacity          |
| 4 wash temperatures | Timed dry               |
| 4 water levels      | 4 cycle - 3 temp.       |
| Magic clean filter  | Extra large lint screen |

**ALL THESE UNBEATABLE EXTRAS AT NO EXTRA COST!**

- Top Trade In Allowance
- 24 Hour Delivery and Installation
- Friendly Home Town Attention
- Price Guarantee After the Sale
- Free Water Lines
- 4 Year Whirlpool Warranty
- Complete Full Line Service
- Complimentary Pricing
- Best of 100 Customer Satisfaction



**MODERN BUILDERS Home Center**

Hwy. 14E. Mountain View 269-3808

IT PAYS  
TO SHOP  
AT YOUR  
NEIGHBORHOOD  
TOWN & COUNTRY  
FOOD STORE

NU-WAY  
FOODS OF  
MOUNTAIN  
VIEW

WE RESERVE THE  
RIGHT TO LIMIT  
QUANTITIES

# NU-WAY FOODS & TOWN & COUNTRY SUPER MARKETS ARKANSAS' LOW PRICE LEADER

SEPTEMBER 14  
THRU  
SEPTEMBER 20

TRAVELER'S  
EXPRESS  
MONEY ORDERS  
SOLD

WE GLADLY  
ACCEPT  
USDA FOOD  
COUPONS &  
MIC VOUCHERS

## BAKERY

"BAKERY FRESH"  
WHITE OR WHEAT

BREAD 2/\$1

CINNAMON ROLLS 4/89¢

M & M BROWNIES 4/\$1.99

## DELI "TWO FER" SALE

R.B. RICE POTATO SALAD 2 LBS \$1.79

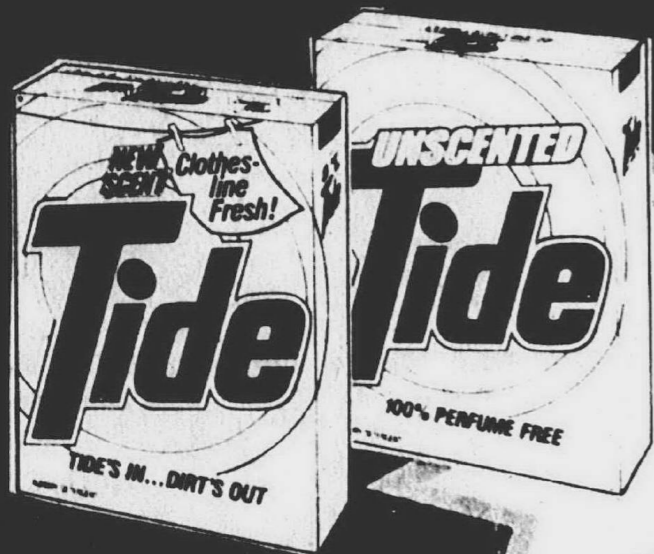
NORWESTERN TURKEY BOLOGNA 2 LBS \$1.99

CHUNKY TURKEY SALAD 2 LBS \$3.79

BAKERY - DELI ITEMS GOOD ONLY AT  
MELBOURNE, HIGHLAND, BATESVILLE,  
HEBER SPRINGS, MTN. VIEW

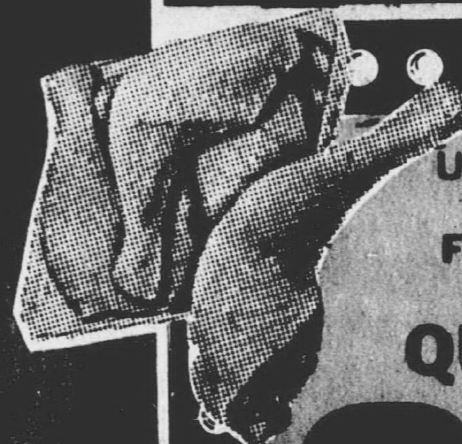
**A FRIENDLY SMILE IN EVERY AISLE**

## TOWN & COUNTRY SAVES



REGULAR OR UNSCENTED  
TIDE

**\$1.49**  
42 OZ



USDA GRADE A  
HUDSON  
FLAVORFRESH  
FRYER LEG  
QUARTERS

**39¢**  
LB



48 CT  
CALIFORNIA  
RED  
GRAPEFRUIT  
FAMILY PACK

10/**\$1.99**

## TOWN & COUNTRY SAVES



CHICKEN OF THE SEA  
TUNA

LIMIT 4  
CANS  
6.5 OZ

**58¢**

## TOWN & COUNTRY SAVES



ALWAYS SAVE  
CORN, PEAS  
GREEN BEANS

**4/\$1**  
16 OZ



ANGEL SOFT  
BATH TISSUE  
4 ROLL

**99¢**

**ARKANSAS' LOW PRICE LEADER**



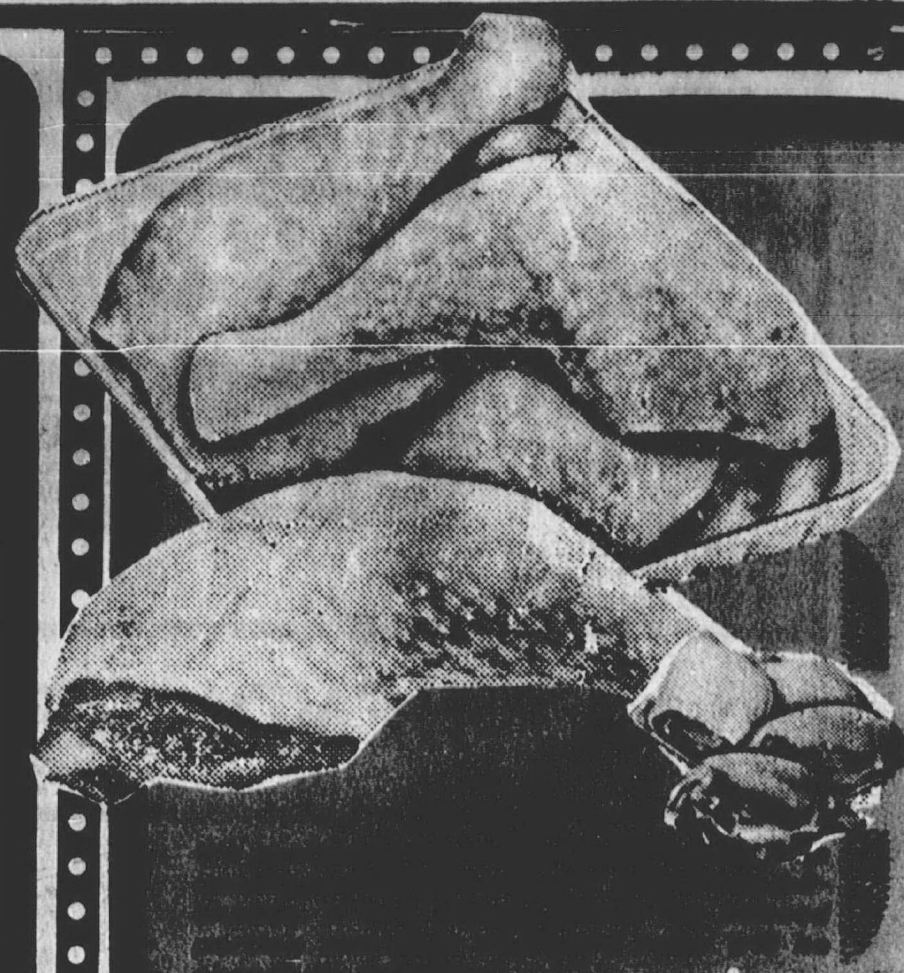
**MASTER BLEND  
COFFEE**  
13 OZ

**\$1.88**



**ANGEL SOFT  
BATH  
TISSUE**  
4 ROLL

**89¢**



QUALITY  
GUARANTEED

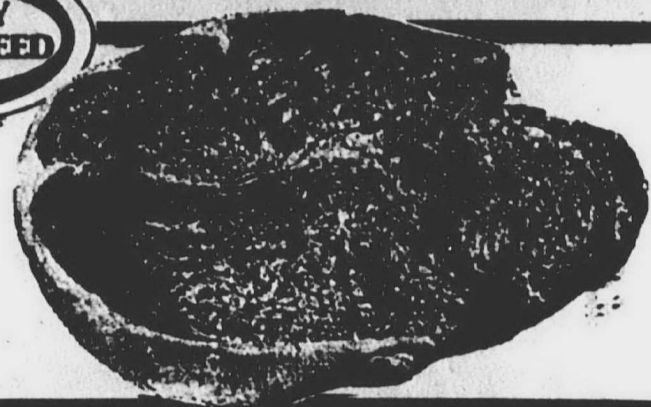


**GREEN GIANT PINTO  
GREAT NORTHERN  
BLACK-EYED  
RED BEANS**  
17 OZ

**28¢**



USDA Choice Boneless  
Top Round  
**ROAST . . . . . LB \$2.29**  
Iowa Gold  
All Meat  
**HOT DOGS . . . . . 12 OZ 59¢**  
Soltz 1 Pound  
Lunchmeats &  
**BOLOGNAS . . . . . LB \$1.29**  
Oldhams Whole  
Hog Pork  
**SAUSAGE . . . . . LB \$1.29**



Sold In 5 Lb. Boxes  
\$3.95 5 Lb. Box  
Ole Southern Beef  
**PATTIES . . . . . LB 79¢**  
Inland Valley Curley Q  
Or Longbranch  
**FRENCH FRIES 40 OZ \$1.99**  
Family Pack King Cotton  
Farmer's Pride Sliced Slab  
**BACON . . . . . LB 98¢**  
King Cotton Lite  
**FRANKS . . . . . LB 88¢**



**DAIRY SPECIALS**



**LIGHT N JUICY  
PUNCH, GRAPE  
ORANGE**

**\$1.09**  
64 OZ

10 OZ KRAFT 1/2  
MOON COLBY OR  
**CHEDDAR \$1.69**

1/2 GAL COLEMAN  
**BUTTERMILK 97¢**

16 OZ COLEMAN  
1/2 & 1/2 **79¢**



**KRAFT  
PARKAY  
MARGARINE**

**48¢**  
1 LB

8 OZ VELVEETA  
**SHREDDED \$1.49**

2 LB BEST CHOICE BOX  
**CHEESE \$2.59**

7.5 OZ BEST CHOICE  
**BISCUITS 5/51**



**FROZEN SPECIALS**



**COLEMAN GERMAN  
CHOCOLATE CRUNCH  
ICE CREAM  
FLAVOR OF THE MONTH**

**\$1.99**  
1/2 GAL



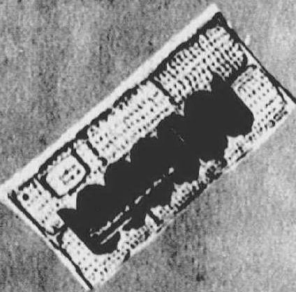
**16 OZ BEEF  
FRANKS 3/51**



**16 OZ CHICKEN  
FRANKS \$1.00**



**16 OZ SAUSAGE  
FRANKS \$1.00**



**GREEN GIANT  
CORN ON COB**

**\$1.99**  
12 EARS



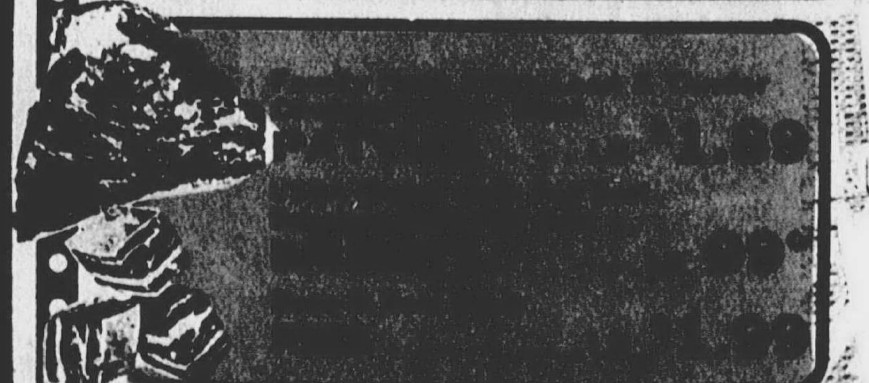
**16 OZ GREEN GIANT  
VALLEY COMBO  
VEGETABLES \$1.99**



**16 OZ GREEN GIANT  
VEGETABLE & BUTTER  
SAUCE 99¢**



**20 OZ IDEAL SPLIT  
TOP WHITE OR  
WHEAT 89¢**



**FAMILY PACK  
HUDSON  
FLAVORFRESH  
FRYER  
DRUMSTICKS**  
**89¢** LB



HUDSON FLAVORFRESH  
USDA GRADE A  
FRYER LEG

**QUARTERS**

**3.99** LB



**KRAFT  
MIRACLE  
WHIP**  
32 OZ

**\$1.58**



**HUNT'S  
TOMATO  
SAUCE**  
8 OZ

**4/88**¢

USDA CHOICE  
GRAIN FED BEEF  
BONELESS BEEF

**ROUND STEAKS**

**\$1.69** LB

BONELESS EXTRA  
LEAN BEEF

**RUMP ROAST**

**\$1.99** LB

FAMILY PACK  
TENDERIZED  
BONELESS BEEF

**CUBE STEAKS**

**\$1.99** LB

EXTRA LEAN  
GROUND FRESH

**GROUND ROUND**

**\$1.69** LB

FAMILY PACK  
USDA CHOICE  
BONELESS SIRLOIN

**TIP STEAKS**

**\$2.39** LB

Sliced Fresh Beef  
**LIVER** ..... LB **89**¢

See Treasure  
Fish Sticks &  
**PORTIONS** .32 OZ **\$2.69**

Gorton's Crunchy  
Fish Sticks &  
**FILLETS** ..... 8 OZ **\$1.69**

FAMILY PACK  
HUDSON  
FLAVORFRESH  
FRYER  
THIGHS

**79**¢

USDA CHOICE  
BONELESS EYE OF  
ROUND  
ROAST

**\$2.49** LB



King Cotton Country  
Brand Loop Smoked  
**SAUSAGE** ... LB **\$1.59**

Armour Jumbo Meat  
Or Beef  
**FRANKS** ... LB **\$1.19**

Armour Thick Or Thin  
2 Lb. Box Sliced  
**BACON** ... 2 LB BOX **\$2.49**

Family Pack Armour Chicken Fried  
Breaded Beef Or Pork  
**PATTIES** ... LB **\$1.29**



Seitz "Deli  
Style" Chunk  
**BOLOGNA** ..... LB **89**¢

Hudson Flavorfresh  
Boneless Breast  
**FILLETS** ... LB **\$3.39**

Lean Boneless Beef  
**STEW MEAT** ... LB **\$1.59**

Family Pack X-Lean  
Boneless Beef Minute  
**STEAKS** ..... LB **\$1.79**



**HUNT'S  
SPAGHETTI  
SAUCE**  
27.5 OZ

**88**¢

**COUNTRY FRESH PRODUCE**

FAMILY PACK  
48 CT CALIFORNIA RED  
**GRAPEFRUIT**

**10 / \$1.99**

FAMILY PACK  
CALIFORNIA  
TROMPSON  
SEEDLESS  
**GRAPES**

**69**¢ LB

FAMILY PACK  
MICHIGAN PRUNE  
**PLUMS**

**3** LB **\$1**

5 LB BAG  
NEW YORK  
MISSOURI  
**APPLES**

**\$1.59**

FAMILY PACK WASHINGTON  
BARTLETT  
**PEARS** LB **59**¢

JUMBO 12 CT CAL.  
CANTALOUPE LB **25**¢

WISC. GREEN  
CABBAGE LB **19**¢

5 LB BAG YELLOW  
ONIONS **89**¢

VINE RIPE SMALL  
TOMATOES **3** LB **\$1**

2 LB BAG COLO  
CARROTS **59**¢

COLO SUPER SELECT  
CUCUMBERS **2/89**¢

CAL EXTRA LARGE  
GREEN BELL  
PEPPER **2/89**¢

20 LB BAG RED  
POTATOES **\$1.99**

CAL GREEN  
ONIONS **3/1**



Here's This Week's

18/8 STAINLESS STEEL  
**COOKWARE**  
"WEEKLY SPECIAL"

1/2 Quart  
Covered Saucepan

Feature Week Retail **\$12.99** With a \$10 Purchase  
Our Regular Retail \$14.99

18/8 The Very Best Stainless:

Lucent Cookware is 18/8 the very best quality stainless steel. This high quality material creates a more durable, longer lasting, bright mirror finish that will not tarnish, pit or rust, and will stay carefree through years of use.

This fine quality cookware also features tri-ply bottoms, "see-thru" domed glass lids and is dishwasher safe.

**LUCENT**  
18/8 STAINLESS STEEL  
**COOKWARE**

Check the Weekly Savings Schedule in this ad and start your set of Lucent Cookware this week. Take advantage of our Weekly Specials and complete the entire Lucent 18/8 Stainless Steel Cookware Collection for your kitchen. This beautiful cookware will be a welcome addition to your home.



THE PLY BOTTOM STAYS FLAT. NO WARPING. ALL LIDS ARE "SEE-THRU" AND HAVE PEEK-THRU DESIGN.



HEAT HARDENED GLASS SEE THRU LID



NON-SLIP TEXTURED MATTE FINISHED HANDLE Heat Resistant up to 300 F. 100% C. DISHWASHER SAFE

Plus Tax Where Applicable

Here's Our Weekly Savings Schedule

| On Sale Week | Description             | Regular Price | Special Price |
|--------------|-------------------------|---------------|---------------|
| 1            | 1 Qt. Open Saucepan     | \$12.99       | \$9.99        |
| 2            | 8" Open Skillet         | \$8.99        | \$6.99        |
| 3            | 1 1/2 Qt. Cov. Saucepan | \$12.99       | \$10.99       |
| 4            | 5 Qt. Cov. Saucepan     | \$19.99       | \$17.99       |
| 5            | 5 Qt. Cov. Dutch Oven   | \$26.99       | \$23.99       |
| 6            | 2 Qt. Cov. Saucepan     | \$15.99       | \$13.99       |
| 7            | 4 Qt. Cov. Dutch Oven   | \$24.99       | \$21.99       |
| 8            | 10" Open Skillet        | \$13.99       | \$11.99       |

Complete Pieces - Available throughout the program.

| Item                   | Regular Price | Special Price |
|------------------------|---------------|---------------|
| 1 Qt. Cover            | ---           | \$3.99        |
| 11" Cov. Chicken Fryer | ---           | \$28.99       |
| 1 Qt. Cov. Stock Pot   | ---           | \$25.99       |

**COKE**  
**DIET COKE**  
**SPRITE**  
2 LITER  
**\$1.09**

**PUREX**  
**BLEACH**  
128 OZ  
**68¢**

**ARMOUR**  
**Chili**  
**CHILI WITH BEANS**  
17 OZ  
**58¢**

**Lipton**  
tea bags  
100 CT LIPTON  
TEA BAGS  
**\$2.59**

**Purina Hi-Pro**  
30 LB PURINA  
HI PRO  
DOG CHOW  
**\$8.99**

**BEST CHOICE**  
**GRAPE JELLY**  
32 OZ  
**99¢**

**Mainstay**  
20 LB PURINA  
MAINSTAY  
**\$4.99**

16 OZ SEVEN SEAS  
SALAD DRESSING  
**\$1.49**

16 OZ AMERICAN  
BEAUTY  
ELBO RONI &  
SPAGHETTI  
**69¢**

**Purina 100**  
6 OZ PURINA 100  
CAT FOOD  
**4/\$1**

**Tender Vittles**  
12 OZ PURINA  
TENDER  
VITTLES  
**\$1.29**

9 OZ NEW KRAFT  
SAUCE WORKS  
SEAFOOD,  
SWEET N SOUR,  
TARTAR  
**79¢**

**Alley Cat**  
7 LB PURINA  
ALLEY CAT  
CAT FOOD  
**\$2.89**

15 OZ CHAMPION  
RAISIN BAG  
**99¢**

**BEST CHOICE**  
RTP  
**CHERRIES**  
16 OZ  
**78¢**

**Doritos**  
REG. \$2.39  
DORITOS  
TORTILLA  
CHIPS  
**\$1.99**

**Hefty**  
10 CT HEFTY TALL  
KITCHEN  
**\$1.59**  
10 CT HEFTY  
TRASH BAGS  
**\$2.49**

**Cat Chow**  
5 LB PURINA  
CAT CHOW  
**\$3.29**

22 OZ 40% OFF LABEL  
LIQUID  
JOY  
**99¢**

**Velveeta**  
12 OZ KRAFT  
VELVEETA  
SHELL  
DINNER  
**\$1.29**

**BAGGIES**  
20 CT SUPER WEIGHT  
QTS. OR 15  
CT GALLON  
BAGGIES  
**89¢**

**Seneca**  
**APPLE JUICE**  
**99¢**

**Always Save**  
**TOMATO SOUP**  
10.75 OZ  
**18¢**

**Smuck's**  
**SMUCK'S RAISED**  
**BAKED HAM**  
**COULDS**  
**99¢**